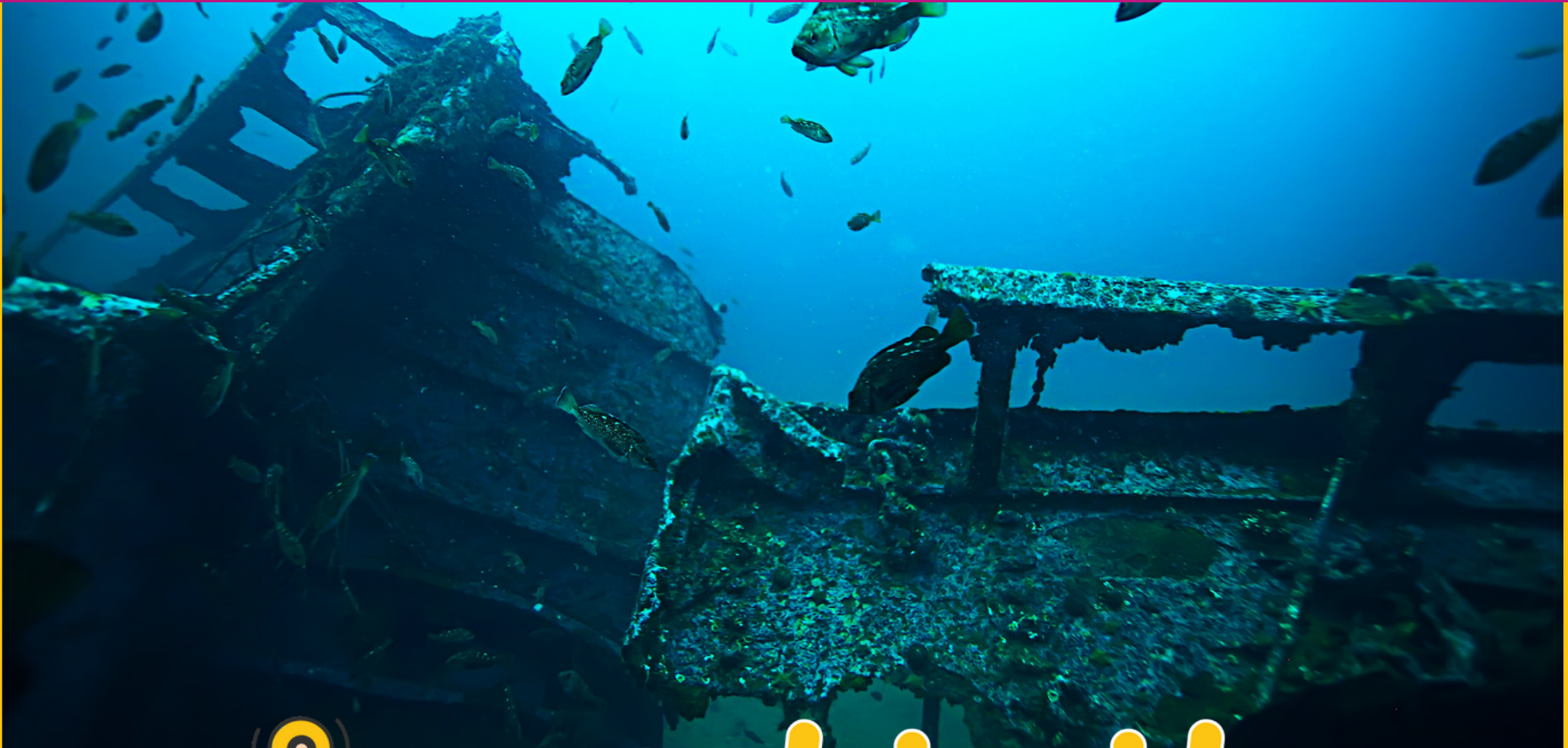


# SUNKEN SHIPS



 **LNK** **tivity**  
Interactive Learning Guides

# WAIT!

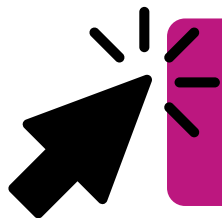
Thank you for considering this LINKtivity for your classroom, but before you make a decision - you should know that you can get **access to this LINKtivity + PLUS our entire library** for about the same price as a single LINKtivity!

The results are in: **Teachers LOVE LINKtivities...** and want more! So, we've made it SUPER easy and cost effective for you to access any and ALL of our LINKtivities inside our LINKtivity Learning membership option! Instead of purchasing just ONE LINKtivity - why not get access to ALL of them... for about the SAME PRICE!



## INSIDE THE MEMBERSHIP YOU'LL HAVE UNLIMITED ACCESS TO:

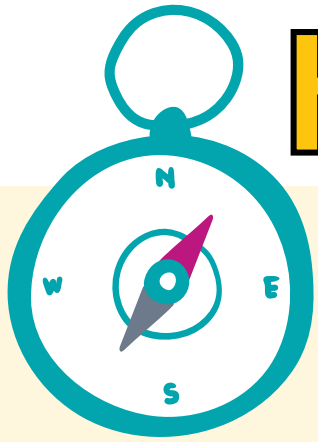
- ✓ The **entire growing LINKtivity® library** inside the Membership (LINKtivities for all content areas)
- ✓ ALL **future LINKtivities** to be added to the membership (new releases each month!)
- ✓ **Teacher guides** to help you set up each LINKtivity® successfully in your classroom
- ✓ **Student resources** that go along with each LINKtivity (printable OR digital)
- ✓ **Kid-friendly rubrics** and **answer keys** for each LINKtivity®



**JOIN NOW**







# KID-EXPLORATIONS!

Our Exploration LINKtivity® Series is great for exploring high-interest themes that kids LOVE! Use our Exploration LINKtivities for fast finishers, at-home learning extensions, highlighting individual student interests, activities for students to complete during school breaks, & more!

Inside the Sunken Ships LINKtivity, students will explore shipwrecks throughout history, and the buried treasures they took with them through images, videos, Google Earth explorations, ship jokes, and offline extension activities!





# More Sample Slides

**CLICK HERE For More to Explore!**

## SUNKEN SHIPS & BURIED TREASURES

**LET'S LEARN ABOUT SUNKEN SHIPS & TREASURES!** Click a category below to begin exploring!

**FACT FILES** **SNAP A PICTURE** **SHIPWRECKED!** **JUST JOKIN'!**

HA HA HA

## FACT FILES

**DID YOU KNOW...**

One of the most famous shipwrecks of all was the Titanic. It was considered "unsinkable," but tragically went down in 1912 after hitting an iceberg, taking more than 1,500 people with it.

The Titanic, underwater

It is estimated that at least 3 million sunken ships are laying across the ocean floors.

A diver explores a sunken ship

Treasure from Black Swan

A ship known as the Black Swan sunk in 1804 with gold worth about \$500 million!

Spanish ship, the San Jose, sank in battle in 1708 carrying about \$17 billion on board. It wasn't discovered until 2015.

The oldest shipwreck ever found was an ancient Greek ship called the Odysseus - more than 2,000 years old!

Click the video icons to learn more

During WWII, a military naval base was attacked in Pearl Harbor, Hawaii. Several U.S. ships were sunk, including the **USS Arizona**. Today, you can visit a memorial built right over where the ship sank.

Click the video icon to take a dive into the USS Arizons.

## SNAP A PICTURE

Check out this amazing footage of a **dive inside of a sunken ship**. This was a British ship discovered 90 years after it went down.

## SNAP A PICTURE

The **Queen Anne's Revenge** was a warship from the 1700's. It was the ship of legendary pirate, Blackbeard, who captured it from the French. Blackbeard used the ship to steal treasures from other ships before abandoning it in 1718.

The ship was found in 1996 off the coast of North Carolina. Many canons and other artifacts have been recovered.

## SNAP A PICTURE

The **RMS Titanic** was a British passenger ship. The ship was claimed to be "unsinkable" because it was designed to hold water in the event that there was a leak. However, when it set sail on April 14, 1912 for the first time, it hit an iceberg and indeed, did sink.

Click the video icon to learn more about the Titanic.

## SNAP A PICTURE

## JUST JOKIN'!

Check out these jokes! Click each card to flip it over and see the answer! Pick your favorite and share with a friend!

It just had a sinking feeling...

What should you do if your boat is sick?

When is it time to paint another coat on a pirate ship?

Why do pirates have such a hard time remembering the alphabet?

How do ocean waters say hello to one another?

What's a sailor's favorite laundry detergent?

## AROUND THE WORLD

Navigate through the tour by clicking on the arrows

Each stop on the tour will give you some information about that location.

Let's travel to some shipwrecks around the world!

We'll be exploring Google Earth so be sure to view the directions on the left so you know how to navigate once we get there!

Click and drag your computer mouse or finger side to side or up and down to see more of the scene.

« When you're ready to explore, click the Google Earth icon!

## MORE TO EXPLORE!

Throughout camp this week, try these additional activities!

**SINK & FLOAT**  
Can you make an unsinkable ship? Using recycled materials around your house, build a model of the Titanic.  
CLICK HERE FOR directions!

**READ ABOUT IT**  
Head to your local library and check out some books about shipwrecks through history.  
CLICK HERE FOR some suggestions

**DESERTED ISLAND**  
Oh no! You've been shipwrecked! Luckily you swam ashore to deserted island. Write a story about what happens next!  
CLICK HERE FOR a drawing challenge!

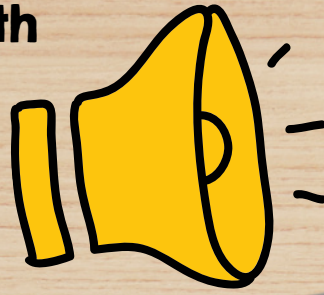
Learn how to draw with step-by-step video directions.  
CLICK HERE FOR a drawing challenge!

**BUILD THE TITANIC!**  
Make a boat out of aluminum foil. Then, gradually add items, such as coins to your boat. How long does it take to sink it? Try out different boat designs to see which can hold the most items!



This LINKtivity is provided with

# AUDIO SUPPORT



## FACT FILES

Click the video icons to learn more >>>



One of the most famous shipwrecks of all was the British ship, the Titanic. It was considered "unsinkable," but tragically went down in 1912 after hitting an iceberg, taking more than 1,500 people with it.



The Titanic, underwater

**DID YOU KNOW...**  
A ship known as the Black Swan sunk in 1804 with gold worth about \$500 million!

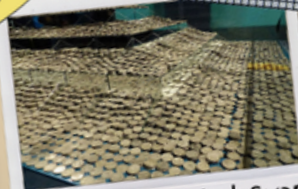
It is estimated that at least 3 million sunken ships are laying across the ocean floors.



A diver explores a sunken ship

Spanish ship, The San Jose, sank in battle in 1708 carrying about \$17 billion on board. It wasn't discovered until 2015.

The oldest shipwreck ever found was an ancient Greek ship called the Odysseus - more than 2,000 years old!



Treasure from Black Swan

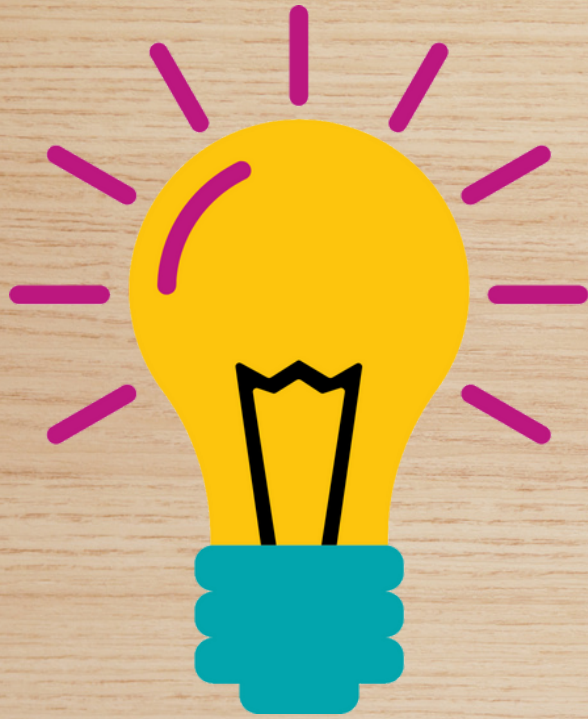


Perfect for English language learners or students who could use a little extra support!





# MORE TO EXPLORE!



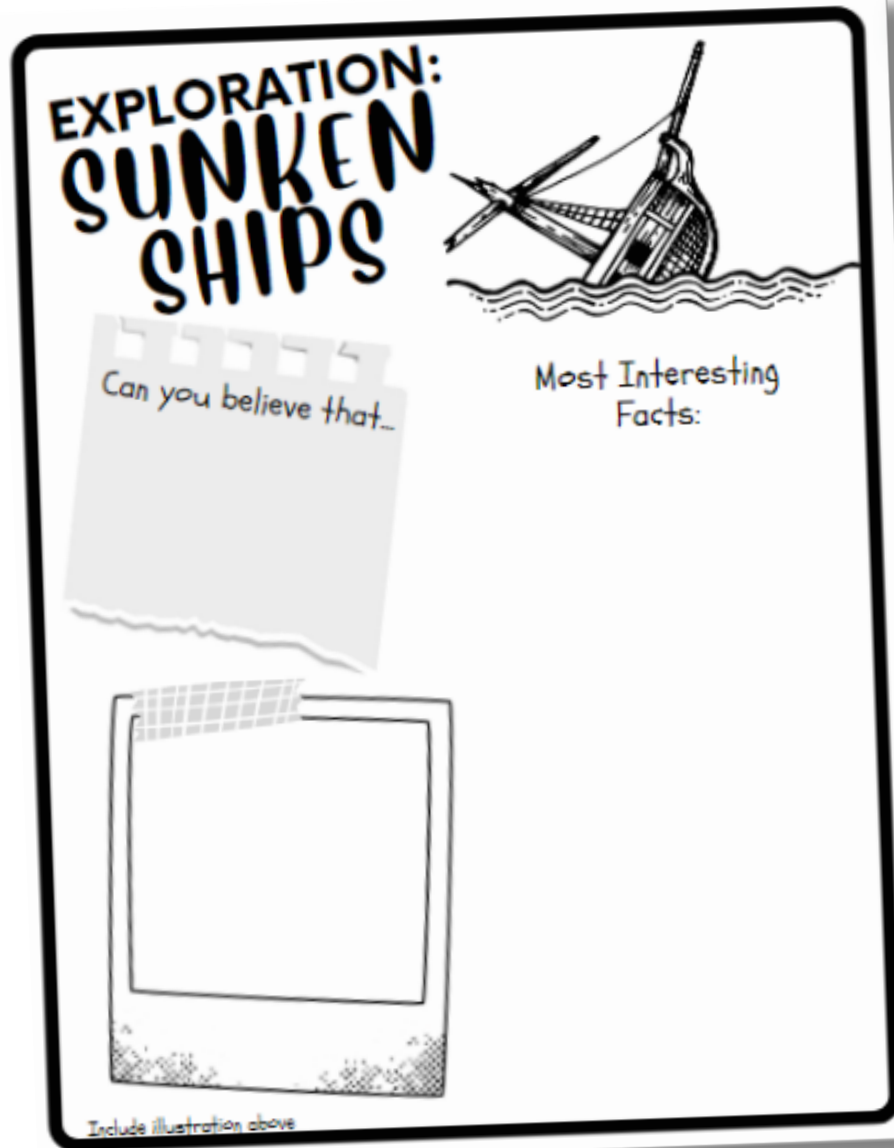
Our Exploration LINKtivities also include additional “unplugged” activities that are great for extending the learning at home, for Fun Friday, indoor recess, over school breaks, & MORE!






# Printable & Digital Student Recording Sheet

## Printable Recording Sheet for LINKtivity




**EXPLORATION:  
SUNKEN SHIPS**



Can you believe that...

Most Interesting Facts:



Include illustration above



## Digital Recording Sheet for LINKtivity in Google Slides

