

SIMILE



What is a SIMILE?

Include 3 examples found in the "Read It" section of the LINKtivity:

- 1
- 2
- 3

 **LINKtivity**
Interactive Learning Guides

WAIT!

Thank you for considering this LINKtivity for your classroom, but before you make a decision - you should know that you can get **access to this LINKtivity + PLUS our entire library** for about the same price as a single LINKtivity!

The results are in: **Teachers LOVE LINKtivities...** and want more! So, we've made it SUPER easy and cost effective for you to access any and ALL of our LINKtivities inside our LINKtivity Learning membership option! Instead of purchasing just ONE LINKtivity - why not get access to ALL of them... for about the SAME PRICE!



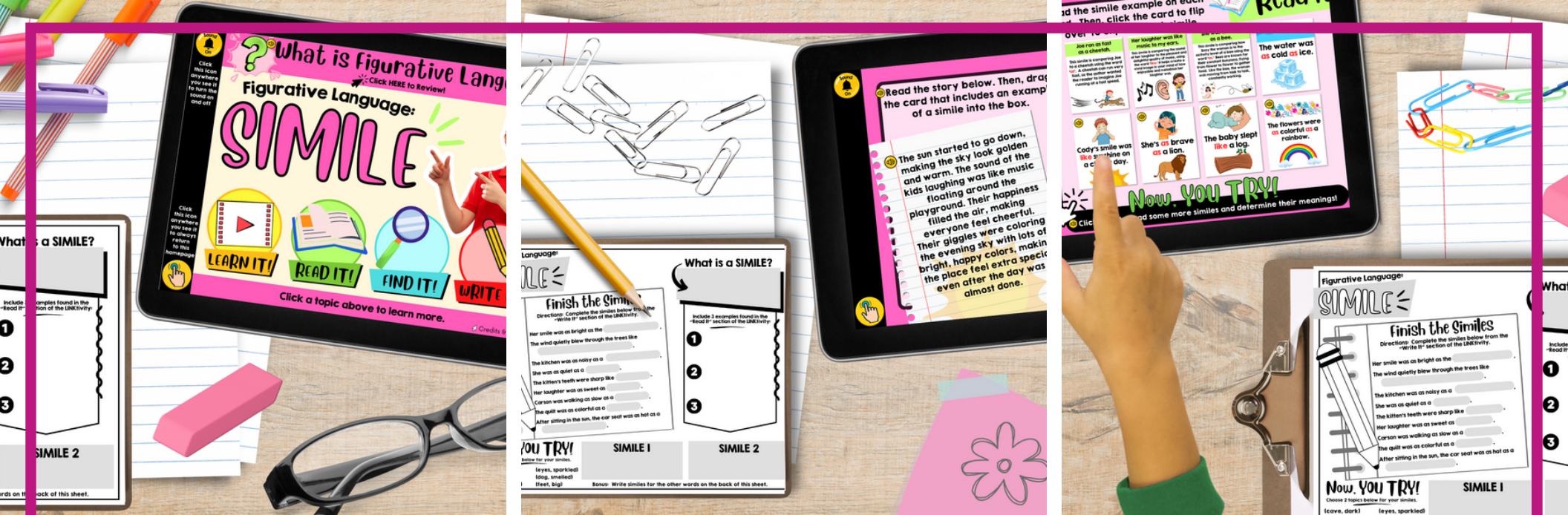
INSIDE THE MEMBERSHIP YOU'LL HAVE UNLIMITED ACCESS TO:

- ✓ The **entire growing LINKtivity® library** inside the Membership (LINKtivities for all content areas)
- ✓ ALL **future LINKtivities** to be added to the membership (new releases each month!)
- ✓ **Teacher guides** to help you set up each LINKtivity® successfully in your classroom
- ✓ **Student resources** that go along with each LINKtivity (printable OR digital)
- ✓ **Kid-friendly rubrics** and **answer keys** for each LINKtivity®

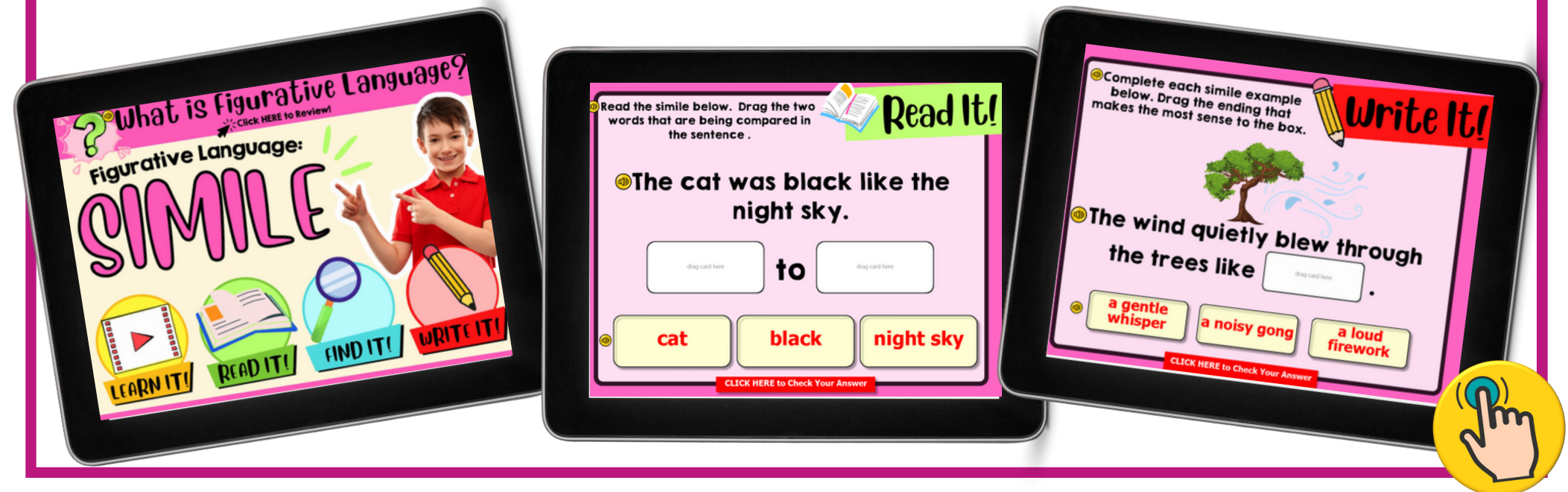


JOIN NOW

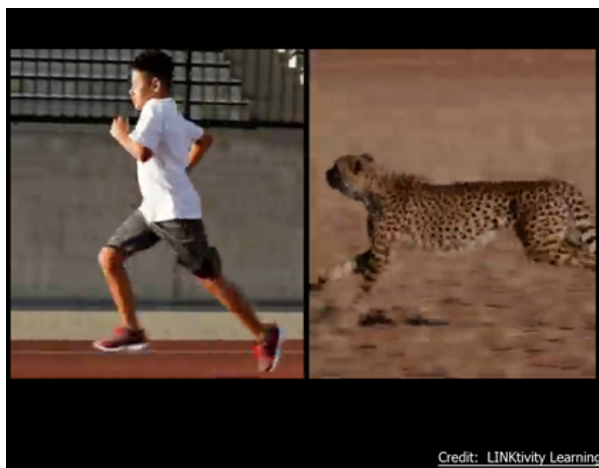




Transitioning to the FIND category, students will dive into short stories, honing their ability to identify similes within passages. Finally, in the WRITE category, students will apply their newfound knowledge by crafting their own similes through guided practice. This interactive LINKtivity is a perfect addition to morning work, literacy centers, and independent practice, making the learning process both enjoyable and effective for students.



More Sample Slides



Credit: LINKtivity Learning

Read It!

Read the simile below. Drag the two words that are being compared in the sentence.

☛ Kate's face was as red as a tomato after running the race.

Correct! Click "CONTINUE" to Move On!

Kate's face to tomato

race

Write It!

Complete each simile example below. Drag the ending that makes the most sense to the box.

☛ She was as quiet as a mouse.

Correct! Click "CONTINUE" to Move On!

lion cookie

Read It!

Read the simile example on each card. Then, click the card to flip it over to explore each simile.

<p>Joe ran as fast as a cheetah.</p> <p>This simile is comparing Joe to a cheetah using the word "as". A cheetah can run very fast, so the author wanted the reader to imagine Joe running at a fast speed.</p>	<p>Her laughter was like music to my ears.</p> <p>This simile is comparing the sound of her laughter to the pleasant and delightful quality of music, using the word "like". It helps create a vivid image in your mind of how joyful and wonderful her laughter was.</p>	<p>She was as busy as a bee.</p> <p>This simile is comparing how busy the woman is to the active level of a bee using the word "as". Bees are known for their constant busyness, flying from flower to flower to gather food. Like the bee, the woman was moving from task to task, constantly working.</p>
<p>Cody's smile was like sunshine on a cloudy day.</p>	<p>She's as brave as a lion.</p>	<p>The baby slept like a log.</p>
<p>The water was as cold as ice.</p>	<p>The flowers were as colorful as a rainbow.</p>	

Now, YOU TRY!

Click HERE to read some more similes and determine their meanings!

Find It!

Read the story below. Then, drag the card that includes an example of a simile into the box.

I sat in my bed, peering out the window. Everyone else was sleeping, but I was awake. The stars glittered in the night sky, shining like tiny diamonds scattered across a dark velvet cloth. The moon hung high, while the gentle breeze whispered through the trees. Everything seemed so peaceful. The only sound I could hear was my clock ticking on the wall.

I sat in my bed, peering out the window.

Correct! Click "CONTINUE" to Move On!

The stars glittered in the night sky, shining like tiny diamonds scattered across a dark velvet cloth.

A simile is a type of figurative language that compares two different things using the word 'like' or 'as.'

Credit: LINKtivity Learning

Find It!

Read the story below. Then, drag the card that includes an example of a simile into the box.

In the school lunchroom, kids moved around like busy ants, talking and sharing stories during lunchtime. The clinking of trays and forks made lots of noise, echoing through the room. Students sat at each table enjoying turkey sandwiches, watermelon, and veggies until it was time to head back to class.

The clinking of trays and forks made lots of noise, echoing through the room.

In the school lunchroom, kids moved around like busy ants, talking and sharing stories during lunchtime.

CLICK HERE to Check Your Answer

Write It!

Complete each simile example below. Drag the ending that makes the most sense to the box.

The wind quietly blew through the trees like _____.

a gentle whisper a noisy gong a loud firework

CLICK HERE to Check Your Answer

Read It!

Read the simile below. Drag the two words that are being compared in the sentence.

The cat was black like the night sky.

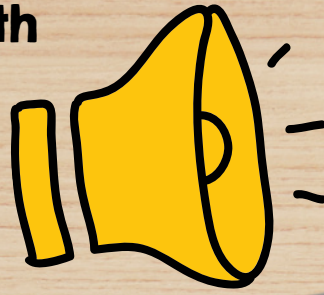
cat black night sky

CLICK HERE to Check Your Answer



This LINKtivity is provided with

AUDIO SUPPORT



Perfect for English language learners or students who could use a little extra support!

Sound On

Go Back

Find It

Read the story below. Then, drag the card that includes an example of a simile into the box.

In the school lunchroom, kids moved around like busy ants, talking and sharing stories during lunchtime. The clinking of trays and forks made lots of noise, echoing through the room. Students sat at each table enjoying turkey sandwiches, watermelon, and veggies until it was time to head back to class.

The clinking of trays and forks made lots of noise, echoing through the room.

In the school lunchroom, kids moved around like busy ants, talking and sharing stories during lunchtime.

drag card here

CLICK HERE to Check Your Answer



Teacher & Student Resources

Teacher Lesson Plan

Recording Sheet (printable or digital)

LESSON

ESSENTIAL QUESTIONS:

What is a simile?
How do authors use similes in their writing?

Standards Covered

L.3.3, L.3.5, L.3.5a,
RL.3.4, L.4.3, L.4.5,
L.5.5, L.5.5a, RL.5.4

Materials Needed

Similes LINKtivity®
Similes Student Recording Sheet (optional)
Chart Paper and Markers or SmartBoard
Simile Poster

Teacher Preparation

Preview the Similes LINKtivity® and plan for how you will share the LINKtivity with students (ex. assign link in Google Classroom, prepare QR codes, etc). Make copies of the recording sheet (optional). Print off the Similes poster. Laminate for durability. Prepare an anchor chart/slide with a few examples of similes written on it (ex. Sarah was as quiet as a mouse.)

Lesson Introduction (5-10 min.)

- Introduce the essential question, and if needed, review the concept of figurative language.
- Display your anchor chart/slide with simile examples on it. Read each sentence with students.
- **ASK:** What is this sentence trying to say? What two things are being compared?
- Guide students in a conversation about what each sentence is really saying, and the imagery the words create.
- Use the poster to introduce similes.
- Watch the "Learn It" video as a class. It can be found in the LINKtivity®, or by clicking here.
- Make sure students have a clear understanding about similes.

Lesson Conclusion (2-5 min.)

Review essential questions and have them write what they have learned.

Similes

A simile is a type of figurative language that compares two different things using the word 'like' or 'as.'



Kaya ran **as** fast **as** a cheetah!
Kaya ran fast **like** a cheetah!

Classroom Poster

Figurative Language:

SIMILE

Finish the Similes

Directions: Complete the similes below from the "Write It" section of the LINKtivity.

Her smile was as bright as the _____
The wind quietly blew through the trees like _____
The kitchen was as noisy as a _____
She was as quiet as a _____
The kitten's teeth were sharp like _____
Her laughter was as sweet as _____
Carson was walking as slow as a _____
The quilt was as colorful as a _____
After sitting in the sun, the car seat was as hot as a _____

SIMILE 1

Bonus: Write similes for the other words on the back of this sheet.

SIMILE

Finish the Similes

Directions: Complete the similes below from the "Write It" section of the LINKtivity.

Her smile was as bright as the _____
The wind quietly blew through the trees like _____
The kitchen was as noisy as a _____
She was as quiet as a _____
The kitten's teeth were sharp like _____
Her laughter was as sweet as _____
Carson was walking as slow as a _____
The quilt was as colorful as a _____
After sitting in the sun, the car seat was as hot as a _____

Now, YOU TRY!

Choose 2 topics below for your similes.
(leave, dark) (eyes, sparkled)
(boy, loud) (dog, smelled)

SIMILE 1

SIMILE 2

What is a SIMILE?

Include 3 examples found in the "Read It" section of the LINKtivity!

Similes

Student:

4	3	2	1
I can clearly explain what a simile is.	I can explain what a simile is.	I can somewhat explain what a simile is.	I struggle to explain what a simile is.
I can identify similes in my reading and writing without assistance.	I can identify similes in my reading and writing with little assistance.	I can identify simile in my reading and writing with assistance.	I have hard time identifying similes in my reading and writing, even with assistance.
I can come up with my own similes without assistance and use them effectively in my writing to create mental images for the reader.	I can come up with my own similes in my writing to create mental images for the reader with little assistance.	I can sometimes come up with my own similes to create mental images for the reader with assistance.	I am unable to come up with my own similes.

Similes

Student:

4	3	2	1
I can clearly explain what a simile is.	I can explain what a simile is.	I can somewhat explain what a simile is.	I struggle to explain what a simile is.
I can identify similes in my reading and writing without assistance.	I can identify similes in my reading and writing with little assistance.	I can identify simile in my reading and writing with assistance.	I have hard time identifying similes in my reading and writing, even with assistance.
I can come up with my own similes without assistance and use them effectively in my writing to create mental images for the reader.	I can come up with my own similes in my writing to create mental images for the reader with little assistance.	I can sometimes come up with my own similes to create mental images for the reader with assistance.	I am unable to come up with my own similes.

Figurative Language:

SIMILE

Answer Key

Finish the Similes

Directions: Complete the similes below from the "Write It" section of the LINKtivity.

Her smile was as bright as the **the sun**
The wind quietly blew through the trees like **a gentle whisper**
The kitchen was as noisy as a **school cafeteria**
She was as quiet as a **mouse**
The kitten's teeth were sharp like **knives**
Her laughter was as sweet as **honey**
Carson was walking as slow as a **turtle**
The quilt was as colorful as a **rainbow**
After sitting in the sun, the car seat was as hot as a **frying pan**

Now, YOU TRY!

Choose 2 topics below to create your own simile.
(leave, dark) (eyes, sparkled)
(boy, loud) (dog, smelled)
(feet, big)

What is a SIMILE?

a type of figurative language that compares two different things using the word 'like' or 'as.'

- Include 3 examples found in the "Read It" section of the LINKtivity!
- 1 Possible examples:
 - Joe ran as fast as a cheetah.
 - Her laughter was like music to my ears.
 - She was as busy as a bee.
 - The water was as cold as ice on a cloudy day.
 - Cody's smile was like sunshine.
 - She's as brave as a lion.
 - The baby's teeth were sharp like a dog.
 - The flowers were as colorful as a rainbow.
 - 2
 - 3

SIMILE 1

SIMILE 2

Similes will vary

Bonus: Write similes for the other words on the back of this sheet.

Answer Key & Rubric

