

THE LOST COLONY OF ROANOKE ISLAND



L  **LNK** **tivity**
Interactive Learning Guides

WAIT!

Thank you for considering this LINKtivity for your classroom, but before you make a decision - you should know that you can get **access to this LINKtivity + PLUS our entire library** for about the same price as a single LINKtivity!

The results are in: **Teachers LOVE LINKtivities...** and want more! So, we've made it SUPER easy and cost effective for you to access any and ALL of our LINKtivities inside our LINKtivity Learning membership option! Instead of purchasing just ONE LINKtivity - why not get access to ALL of them... for about the SAME PRICE!



INSIDE THE MEMBERSHIP YOU'LL HAVE UNLIMITED ACCESS TO:

- ✓ The **entire growing LINKtivity® library** inside the Membership (LINKtivities for all content areas)
- ✓ ALL **future LINKtivities** to be added to the membership (new releases each month!)
- ✓ **Teacher guides** to help you set up each LINKtivity® successfully in your classroom
- ✓ **Student resources** that go along with each LINKtivity (printable OR digital)
- ✓ **Kid-friendly rubrics** and **answer keys** for each LINKtivity®



JOIN NOW

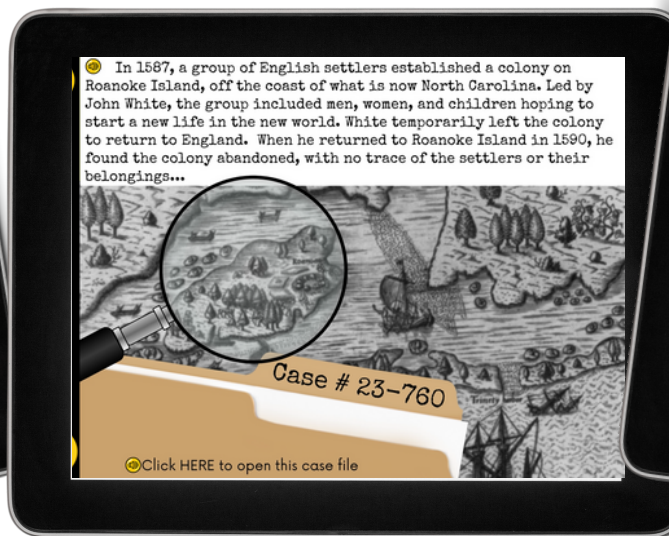




HISTORY'S BIGGEST MYSTERIES!

Discover intriguing historical mysteries with our History Mystery LINKtivity® Series, designed to unravel some of the most captivating stories that have puzzled people throughout the ages! These kid-favorite LINKtivities work great as fast finishers, at-home learning extensions, highlighting individual student interests, activities for students to complete during school breaks, & more!

Inside the History Mystery: Lost Colony of Roanoke Island LINKtivity, student delve into the historical and cultural context of the settlement, including the interactions between the English colonists and the Native American tribes of the area. Students will also learn about the theories and controversies surrounding the disappearance



More Sample Slides

[CLICK HERE For More to Explore!](#)

The Lost Colony of ROANOKE ISLAND

LET'S LEARN ABOUT THE LOST COLONY OF ROANOKE ISLAND!
Click a category below to begin exploring!

CASE FILES **THE EVIDENCE** **UNDERCOVER** **THEORIES**

In 1587, a group of English settlers established a colony on Roanoke Island, off the coast of what is now North Carolina. Led by John White, the group included men, women, and children hoping to start a new life in the new world. White temporarily left the colony to return to England. When he returned to Roanoke Island in 1590, he found the colony abandoned, with no trace of the settlers or their belongings...

Case # 23-760

[Click HERE to open this case file](#)

CASE FILES

[Click the video icon to learn more](#)

THE MYSTERY

In 1587, a group of brave explorers sailed across the sea to start a new colony on Roanoke Island, just off the coast of modern-day North Carolina. They were looking for a fresh start in a new land, far away from their homes in England. But something strange happened on the island. When the leader of the colony, a man named John White, left to go back to England to get more supplies, he was delayed from returning for three long years. When he finally returned to Roanoke Island, he found that the entire colony had vanished without a trace! All the houses and buildings were gone, and there were no signs of the colonists or their belongings. The only clue that John White found was the word "CROATOAN" carved on a post, which was the name of a nearby island and a local Native American tribe. He also found the letters CRO carved on a tree. Despite his efforts to search for the colonists, John White was never able to uncover their fate or whereabouts.

artifact #032

artifact #156

artifact #568

[Click the video icon to learn about colonial life.](#)

During the voyage to Roanoke Island, one of the passengers, Elizabeth Dare was pregnant. She gave birth to a baby girl after arriving on the island. The baby was named Virginia Dare, and became the first English child born on the island.

This painting shows the baptism of Virginia on the island.

THE EVIDENCE

Roanoke Island is located off the coast of modern-day North Carolina on the eastern side of the United States. It is about 8 miles long and 2 miles wide.

THE EVIDENCE

John White, leader of the colony left the island to get more supplies. When he returned to Roanoke Island after 3 years, he found no trace of the colonist. He did, however, find the word "CROATOAN" carved into a tree.

Croatoan was the name of a nearby island as well as of a local group of Native Americans.

THE EVIDENCE

THEORIES

Although no one knows for sure what happened to the colonists who lived on Roanoke Island, there have been many guesses, or theories as to what might have happened to them. Click on each card to learn of a possible theory.

1 THEORY **DISEASE** Some believe the colonists were wiped out by a disease that they caught while living on the island.

2 THEORY

3 THEORY

4 THEORY **5 THEORY** **6 THEORY**

UNDERCOVER

Navigate through the tour by clicking on the arrows

Each stop around the island will tell you information about that location.

Let's travel to Roanoke Island as it exists today!

We'll be exploring Google Earth so be sure to view the directions on the left so you know how to navigate once we get there!

Click and drag your computer mouse or finger side to side or up and down to see more of the scene.

<< When you're ready to explore, click the Google Earth icon!

MORE TO EXPLORE!

Try these additional activities:

DESIGN A COLONY Imagine you've arrived at an uninhabited island and are tasked with setting up a colony. [CLICK HERE](#) for an island map and directions to get you started!

EAT LIKE A COLONIST! What would you eat if you were a colonist? [CLICK HERE](#) for some colonial recipes that you can bake at home!

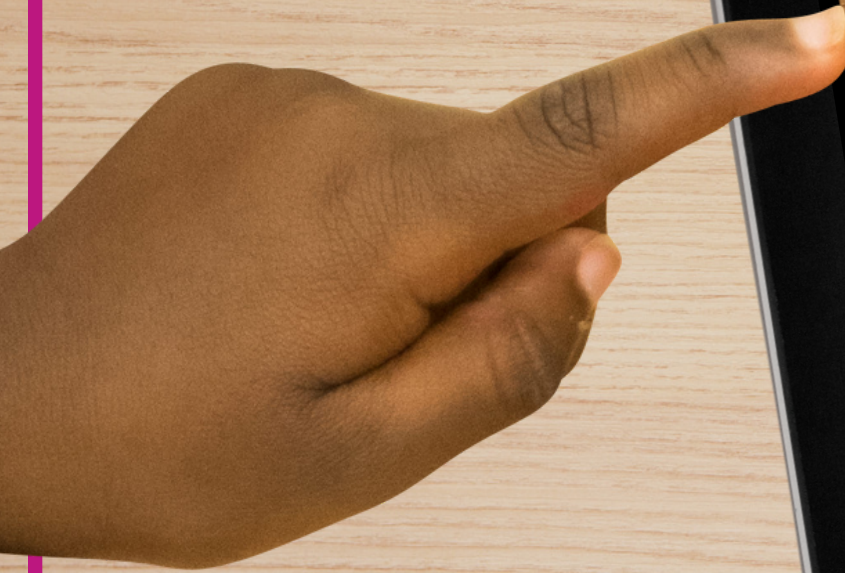
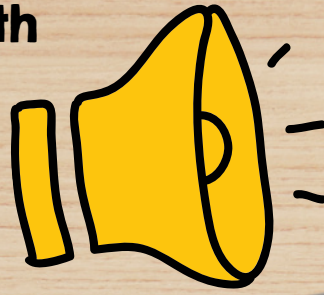
READ ABOUT IT! Head to your local library and check out these cool books about Roanoke Island. [CLICK HERE](#) for a printable list.

DRAWING CHALLENGE Learn how to draw a ship with step-by-step video directions. [CLICK HERE](#) to follow along.

PODCAST Listen to these podcast episodes all about this mystery! [CLICK HERE](#) to see a podcast episode.

This LINKtivity is provided with

AUDIO SUPPORT



CASE FILES



English adventurer Sir Walter Raleigh (pictured below) had sent explorers to the islands off what is now North Carolina as early as 1584. His first attempt to establish a colony failed due to tensions with local Native Americans.



A second attempt to make a permanent colony began in May of 1587 under the leadership of John White. When White left the island to get more supplies, he was delayed in returning to the colony because of a war happening in Europe.



Click the video icon to learn more



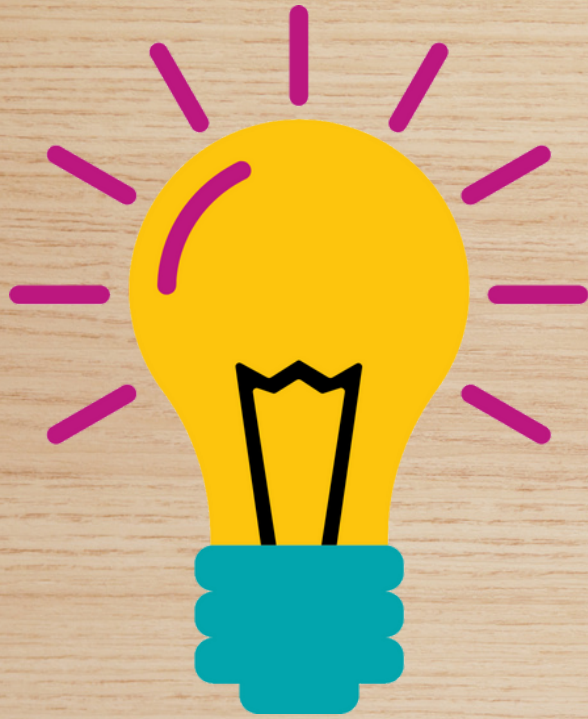
THE MYSTERY

In 1587, a group of brave explorers sailed across the sea to start a new colony on Roanoke Island, just off the coast of modern-day North Carolina. They were looking for a fresh start in a new land, far away from their homes in England. But something strange happened on the island. When the leader of the colony, a man named John White, left to go back to England to get more supplies, he was delayed for three long years. When he finally returned to Roanoke Island, he found that the entire colony had vanished without a trace! All the houses and buildings were gone, and there were no signs of the colonists or their belongings. The only clue that John White found was the word "Croatoan" carved on a post, which was the name of a nearby island and a local Native American tribe. He also found the letters CRO carved on a tree. Despite his efforts to search for the colonists, John White was never able to uncover their fate or whereabouts.

Perfect for English language learners or students who could use a little extra support!



MORE TO EXPLORE!

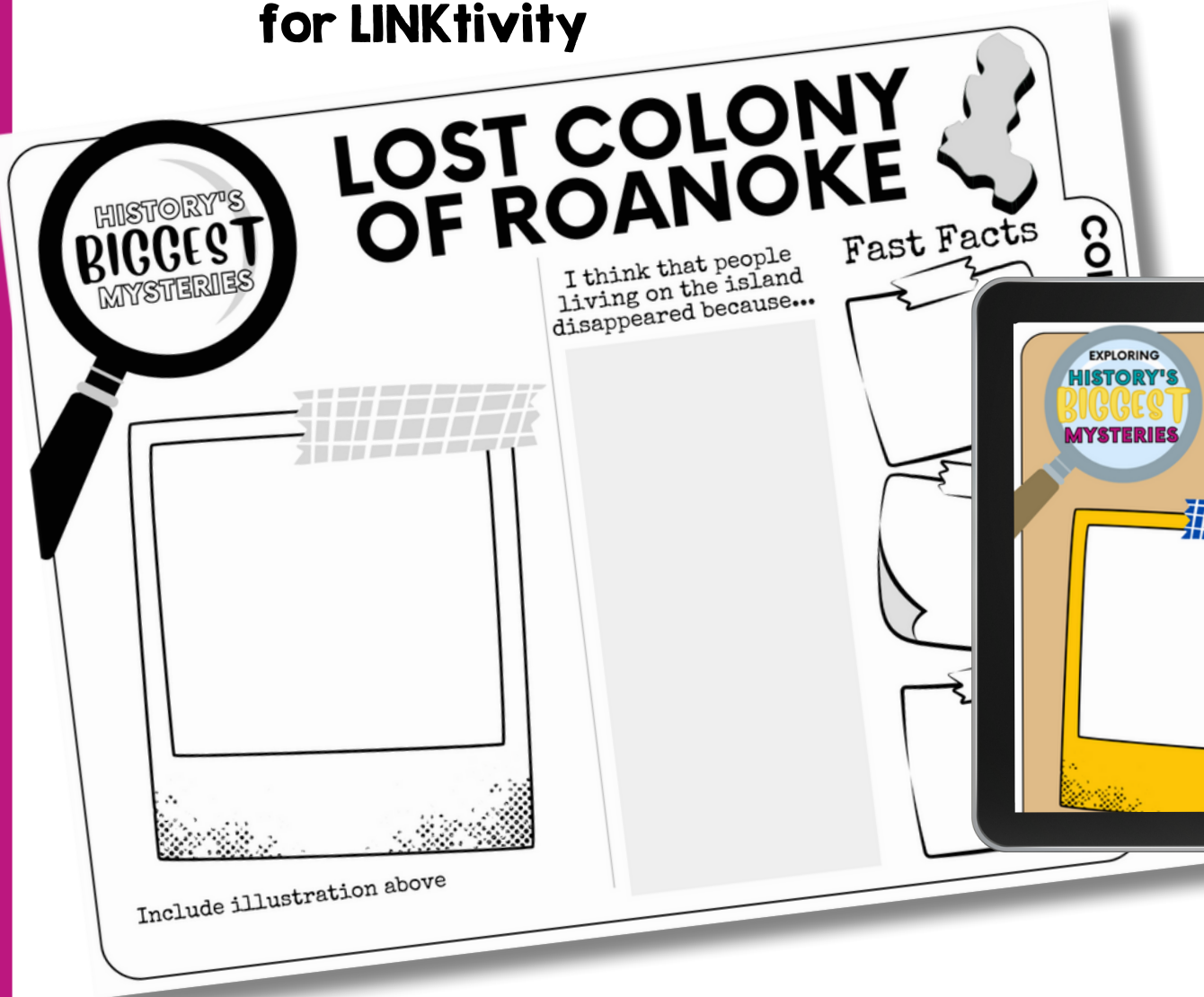


Our History's Mysteries LINKtivities also include additional "unplugged" activities that are great for extending the learning at home, for Fun Friday, indoor recess, over school breaks, & MORE!



Printable & Digital Student Recording Sheet

Printable Recording Sheet
for LINKtivity



Digital Recording
Sheet for
LINKtivity in
Google Slides

