

# NONFICTION TEXT STRUCTURES

**NONFICTION TEXT STRUCTURES**

There are five main types of Nonfiction Text Structures. Click the video on the right to learn more about them!

Click on a category below to learn more.

- Description
- Problem & Solution
- Compare & Contrast
- Cause & Effect

When you've completed the LINKtivity **CLICK HERE** to show what you know.

**LINKtivity**  
Interactive Learning Guides

# WAIT!

Thank you for considering this LINKtivity for your classroom, but before you make a decision - you should know that you can get **access to this LINKtivity + PLUS our entire library** for about the same price as a single LINKtivity!

The results are in: **Teachers LOVE LINKtivities...** and want more! So, we've made it SUPER easy and cost effective for you to access any and ALL of our LINKtivities inside our LINKtivity Learning membership option! Instead of purchasing just ONE LINKtivity - why not get access to ALL of them... for about the SAME PRICE!



## INSIDE THE MEMBERSHIP YOU'LL HAVE UNLIMITED ACCESS TO:

- ✓ The **entire growing LINKtivity® library** inside the Membership (LINKtivities for all content areas)
- ✓ ALL **future LINKtivities** to be added to the membership (new releases each month!)
- ✓ **Teacher guides** to help you set up each LINKtivity® successfully in your classroom
- ✓ **Student resources** that go along with each LINKtivity (printable OR digital)
- ✓ **Kid-friendly rubrics** and **answer keys** for each LINKtivity®



**JOIN NOW**





**HANG SON DOONG**  
Complete the timeline to show the events from the text in order.

2008      2006

Problem & Solution

Sequence

**CC TEXT STRUCTURE ANALYSIS**  
The author provides several dates to help the reader know the events of when the cave was discovered. We also see clue words like *then*, *finally*, and *at last*.

Despite its enormous size, Hang Son Doong wasn't discovered until 1990. Ho Khanh, a local farmer, was caught in a jungle storm. While searching for shelter, he mistakenly stumbled upon the enormous cave. He was so lucky he was able to escape. He was finally able to get back to the cave where he was located. Sadly, it took him years for him to return to the cave.

In 2008, Ho Khanh rediscovered the cave entrance again while hunting. Then, in 2009, he was finally able to confirm his findings with the British Cave Research Association (BCRA) by bringing a British cave diver to the cave. At the time, the cave was the largest in the world. It was named after the cave's discoverer, Ho Khanh.

Over the centuries, various engineers and architects have attempted to straighten the tower and prevent it from falling. Many things have been tried to reverse the leaning of the tower. For example, injecting cement grout into the foundation as well as different kinds of bracing, support, and reinforcement have been tried.

Today, the Leaning Tower of Pisa is eight stories high and is made of white marble. This beautifully designed circular bell tower is one of the most visited places in Pisa, Italy. If you ever go to Europe, be sure to stop by and see this amazing piece of architecture.

**CC TEXT STRUCTURE ANALYSIS**  
Notice how the author gives several examples of what engineers and architects have done over the years to help stop the leaning.

Text Structures are: *the way the author organized their writing to help the reader understand what they are trying to teach us.*

There are 5 types of nonfiction text structures:

- 1 Description
- 2 Cause & Effect
- 3 Problem & Solution
- 4 Compare & Contrast
- 5 Sequence

Write the name of each text structure in the boxes above.

CC BY-SA

Click on a category below to learn more.

Description      Problem & Solution      Compare & Contrast      Cause & Effect      Sequence

When you've completed the LINKtivity CLICK HERE to show what you know.

**NONFICTION Text Structures**

Inside the Nonfiction Text Structures LINKtivity® students will learn what a nonfiction text structure is and how they help readers gain a better understanding of the text. First, they will learn through an animated video. Then, students will explore several examples of the 5 different types of text structures: description, cause & effect, compare & contrast, problem & solution, and sequence.

**NONFICTION TEXT STRUCTURES**

There are five main types of Nonfiction Text Structures. Click the structures on the right to learn more about them.

Click on a category below to learn more.

Description      Problem & Solution      Compare & Contrast      Cause & Effect      Sequence

When you've completed the LINKtivity CLICK HERE to show what you know.

**DESCRIPTION**

Describes a topic, idea, person, or thing by giving specific information about it

Clue Words:

such as for example most importantly specifically in particular in addition

Looks like...      Tastes like...      Smells like...      Feels like...      Sounds like...      Examples...

CLICK HERE to see this text structure in action >>

Look for these words as indicators that it is a DESCRIPTION text structure.

**TOWER OF PISA**

Ever heard of the Leaning Tower of Pisa? No, not simply called the Tower of Pisa. It was intended to stand completely vertical at 85 feet tall, yet unfortunately, the structure began to lean while construction was still underway.

**CC TEXT STRUCTURE ANALYSIS**  
Here the author is describing the construction of the tower and giving details on why the tower is leaning. We also see clue words like *in particular* and *in addition*.

**WHY IS THE TOWER LEANING?**

In 873, construction began on the Tower of Pisa. Specifically, the designed for the square of Miracles, the city's cathedral complex. Shockingly, the bell tower, or campanile, took nearly 200 years to complete due to a series of errors that swept through Europe. Therefore, construction of the tower was complete.

You may be wondering, "why is the tower leaning?" During construction, the builders noticed that the tower was slightly askew. However, since the structure is unstable foundation, in particular, the ground where the tower is largely consists of soft clay, sand, and shells -- not ideal for such a tall and heavy structure! In addition, other things such as the weight of each level and the further sinking of the tower may have also caused the tower to lean.

Look for these words as indicators that it is a DESCRIPTION text structure.



# More Sample Slides

## SEQUENCE

Explains events or steps in order to tell how something is done or how something happens

**REMEMBER:** Dates & times also help show sequence!

**Clue Words:**  
first  
then  
next  
during  
at last  
finally

Look for these words as indicators that it is a **SEQUENCE** text structure.

**CLICK HERE to see this text structure in action >>**

## TEXT STRUCTURE ANALYSIS

The author provides several dates to help the reader know the events of when the cave was discovered. We also see clue words like: then, finally, and at last!

### HANG SON DOONG

It is a massive, majestic marvel – and it's 3 million years old! Hang Son Doong, located in central Vietnam in Southeast Asia and is the largest cave in the world. Translated to mean "Mountain River Cave," Hang Son Doong is a remarkable and awe-inspiring place that visitors will not soon forget.

Despite its enormous size, Hang Son Doong wasn't discovered until 1990. Ho Khanh, a local farmer, was caught in a jungle storm. While searching for shelter, he mistakenly stumbled upon the enormous cave. Yet, as luck would have it, Ho Khanh could not remember exactly where the cave was located. Sadly, it took 18 years for him to return to the cave.

In 2008, Ho Khanh relocated the cave entrance again while hunting. Then, in 2004, he was finally able to confirm his findings with the British Caving Research Association (BCRA) by leading a small party back to the cave. At last, exploration of this amazing cave officially began. By 2010, the Hang Son Doong was officially deemed the largest cave in the world.

**CLICK HERE to see this text structure in action >>**

## COMPARE & CONTRAST

Shows how two or more things are alike and how they are different

**Clue Words:**  
alike  
similar  
unlike  
on the other hand  
different  
however  
both

A Venn Diagram helps to identify similarities & differences.

**CLICK HERE to see this text structure in action >>**

Look for these words as indicators that it is a **COMPARE & CONTRAST** text structure.

## LANDSCAPES

As you can see, these polar opposites both are considered a vast wilderness and the Arctic and Antarctica vary greatly in destinations!

**TUNDRA**  
a cold tundra biome

Though snow-covered terrain is a major part of both polar regions, there are many striking differences. The Arctic has rolling hills, mountains, and plains. It also has massive expanses of tundra and is situated on the edge of the tundra biome. There are many rivers and lakes in the Arctic as well.

**ANTARCTICA**  
a cold tundra biome

However, Antarctica is made up of 98% ice and is considered the largest desert on Earth! Unlike the Arctic, it is a very dry and barren place with sparse vegetation, or plants. As a matter of fact, there are no grasslands, shrubs, or trees in Antarctica. The continent is mainly a thick, frozen sheet of ice with snow-capped mountains and glaciers.

**TEXT STRUCTURE ANALYSIS**  
We notice the author using clue words like both and unlike to help show similarities and differences between each climate.

**CLICK HERE to see this text structure in action >>**

## CAUSE & EFFECT

Shows a relationship between the cause (why) and the effect (what happened)

**Clue Words:**  
due to  
therefore  
reason why  
consequently  
because of  
as a result

Look for these words as indicators that it is a **CAUSE & EFFECT** text structure.

**CLICK HERE to see this text structure in action >>**

## MACHU PICCHU

Imagine a window that would allow you to investigate the past. That's exactly what it's like for tourists visiting the Lost City of the Incas, an ancient civilization known as Machu Picchu, this remarkable city is situated high on the eastern slopes of the Peruvian Andes in South America. Due to its remote, or distant, location, its secrets were well-kept for hundreds of years.

**ARCHAEOLOGIST**  
a person who studies human history

**EXCAVATE**  
to remove pieces of the earth

In 1911, Machu Picchu was rediscovered because of an 11-year-old boy who led American archaeologist to the ruins of the ancient mountain-top city. Consequently, Bingham and his team excavated artifacts that were taken back to Yale University in hopes of uncovering the mysteries surrounding the wondrous, lost city.

**CLICK HERE to see this text structure in action >>**

## PROBLEM & SOLUTION

Discusses a problem and gives possible solutions to fix the problem

**Clue Words:**  
therefore  
because of  
the problem is  
the way to solve this is  
consequently  
reason why  
leads to

Look for these words as indicators that it is a **PROBLEM & SOLUTION** text structure.

**CLICK HERE to see this text structure in action >>**

## TEXT STRUCTURE ANALYSIS

The author continues to explain the problems facing the coral reef. We also see clue words like: another reason why and consequently.

**SAVE THE REEF!**

Dynamite, or blast fishing is exactly as it sounds. Fishermen use explosives to stun or kill fish in order to increase their daily catch. Consequently, these dangerous blasts make catching fish simpler but can be very detrimental to the coral reef.

Water pollution involves many things such as oil spills, chemical pollutants, illegal dumping, and even littering. Because of water pollution, coral reefs become unhealthy and growth of young polyps is prevented. Another reason why coral reefs are becoming extinct is careless tourism. While tourists enjoy diving, snorkeling, and boating near the reef, these fun recreational activities often cause unintentional damage such as breakage or deposition.

**DEPOSITION**  
when rocks or other material build up

The coral reef is worth saving. Many people depend on coral reefs for coastline protection, are scrambling to protect the reef, other people remain uneducated about how to care for and help. One thing you can do to help solve these problems is educate your friends about the hazards of pollution. Talk to others about conserving these oceans. The coral reefs will thank you!

Here, the author shares solutions for saving the coral reef.

**CLICK HERE to see this text structure in action >>**

## WHERE DID EVERYONE GO?

Many have questioned, "What caused the Incas to abandon the city?" Though no one knows for sure, there are a few reasons why the Incas may have left Machu Picchu during the fifteenth century.

One theory is that an illness called smallpox swept through the countryside, therefore, the Inca people living in Machu Picchu may have abandoned the city to avoid getting sick. Another theory is that Machu Picchu was the Inca's royal retreat to escape Spanish rule. In 1532, when the Spanish conquistadors captured the last Inca rebel, the mountaintop fortress was no longer used by Inca royalty. As a result, the roads became overgrown and the city was "lost" to the outside world.

**IRRIGATION**  
the supply of water to land or crops to help them grow

One thing is certain: visitors to Machu Picchu will be astonished by the cleverness of the Incas who built the entire city without the use of wheels or iron tools. Tourists are fascinated by creations, a terraced hillside used for farming, the Temple of the Sun, and a sophisticated irrigation system. As a result of the Inca's brilliant engineering, society remains mesmerized by Machu Picchu!

The author shares possible causes as to why the Inca people left Machu Picchu. We see clue words like: what caused, therefore, and as a result.

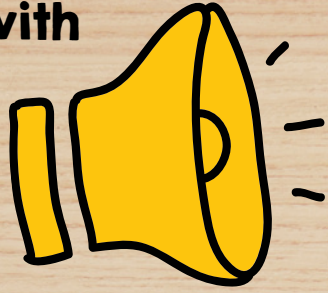
**CLICK HERE to see this text structure in action >>**





This LINKtivity is provided with

# AUDIO SUPPORT



Perfect for English  
language learners or  
students who could use  
a little extra support!



Here the author is describing what the tower looks like

What beautiful white marble!



Over the centuries, various engineers and architects have attempted to straighten the tower and prevent it from falling. Many things have been tried to reverse the leaning of the tower. For example, injecting cement grout into the foundation as well as different kinds of bracing, support, and reinforcement have been tried.



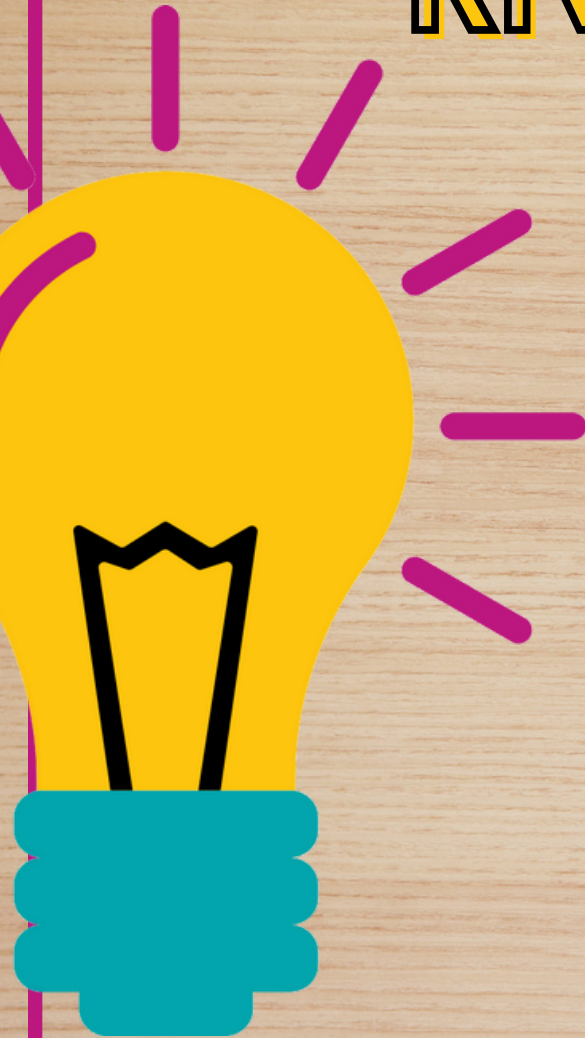
Today, the Leaning Tower of Pisa is eight stories high and is made of white marble. This beautifully designed, circular bell tower is one of the most visited places in Pisa, Italy. If you ever go to Europe, be sure to stop by and see this amazing piece of architecture.

**TEXT STRUCTURE ANALYSIS**  
Notice how the author gives several examples of what engineers and architects have done over the years to help stop the leaning.





# KNOWLEDGE CHECK



Students complete a quick self-check at the end of the LINKtivity to show what they have learned!

Drag each card into the correct box.

## Text Structures

**Description**  
Describes a topic, idea, person, or thing by giving specific information about it

drag box here

drag box here

Discusses a problem and gives possible solutions to fix the problem

drag box here

drag box here

Shows a relationship between the cause (why) and the effect (what happened)

Shows how two or more things are alike and how they are different

Explains events or steps in order to tell how something is done or how something happens

**Problem & Solution**

**Sequence**

**Compare & Contrast**

**Cause & Effect**

Undo

Reset

**CLICK HERE to Check Your Answers!**





# Printable & Digital Student Flipbook

## Printable Flipbook for LINKtivity

### NONFICTION Text Structures

by: \_\_\_\_\_

Text Structures are: \_\_\_\_\_

There are 5 types of nonfiction text structures:

- 1
- 2
- 3
- 4
- 5

Write the name of each text structure in the boxes above.

What are Text Structures?

### DESCRIPTION

Description Text Structures:

Clue Words:

Description

### COMPARE & CONTRAST

Compare & Contrast Text Structures:

Clue Words:

Compare & Contrast

### CAUSE & EFFECT

Cause & Effect Text Structures:

Clue Words:

Cause & Effect

### SEQUENCE

Sequence Text Structures:

Clue Words:

Sequence

Digital Flipbook for LINKtivity in Google Slides

Student Flipbook Rubric				Student:
	4 - Excellent	3 - Good	2 - Satisfactory	1 - Needs Improvement
<b>Neatness &amp; Appearance</b>	My Flipbook is neat and easy to read. I neatly colored in my illustrations with great detail. It is clear that I took my time to make my Flipbook reflect my learning.	My Flipbook is very neat and my writing is easy to read. I neatly colored in my illustrations.	My Flipbook is somewhat neat. Some of my writing is hard to read. I colored in my illustrations.	My Flipbook is quite sloppy. My writing is hard to read. Illustrations are not colored, or are sparsely done.
<b>Accuracy &amp; Completeness</b>	The information in my Flipbook is 100% correct. I've included many details from the LINKtivity and have put what I've learned clearly in my own words. I have included information that goes above and beyond.	The information in my Flipbook is mostly correct. I've included several details from the LINKtivity, written neatly in my own words. My Flipbook includes all of the required information.	My Flipbook contains several inaccuracies or missing pieces of information. I struggled to use the information from the LINKtivity to complete my Flipbook correctly.	My Flipbook has many incorrect or missing pieces of information. I struggled to use the information from the LINKtivity to complete my Flipbook correctly.
			My Flipbook contains some errors in spelling and grammar.	My Flipbook contains many errors in spelling and grammar.

### DESCRIPTION

Description Text Structures:

give a lot of information about a topic, person, place, or idea

Clue Words:

located in Italy

construction began in 1173

took 200 years to build

made of white marble

learned because of uneven setting

sample facts shown

Record some important pieces of information that you learned about the Tower of Pisa.

Description

## Answer Key & Rubric

