

# SECRETS OF EGYPT



**L**  **LNK** **tivity**  
Interactive Learning Guides

# WAIT!

Thank you for considering this LINKtivity for your classroom, but before you make a decision - you should know that you can get **access to this LINKtivity + PLUS our entire library** for about the same price as a single LINKtivity!

The results are in: **Teachers LOVE LINKtivities...** and want more! So, we've made it SUPER easy and cost effective for you to access any and ALL of our LINKtivities inside our LINKtivity Learning membership option! Instead of purchasing just ONE LINKtivity - why not get access to ALL of them... for about the SAME PRICE!



## INSIDE THE MEMBERSHIP YOU'LL HAVE UNLIMITED ACCESS TO:

- ✓ The **entire growing LINKtivity® library** inside the Membership (LINKtivities for all content areas)
- ✓ ALL **future LINKtivities** to be added to the membership (new releases each month!)
- ✓ **Teacher guides** to help you set up each LINKtivity® successfully in your classroom
- ✓ **Student resources** that go along with each LINKtivity (printable OR digital)
- ✓ **Kid-friendly rubrics** and **answer keys** for each LINKtivity®



**JOIN NOW**

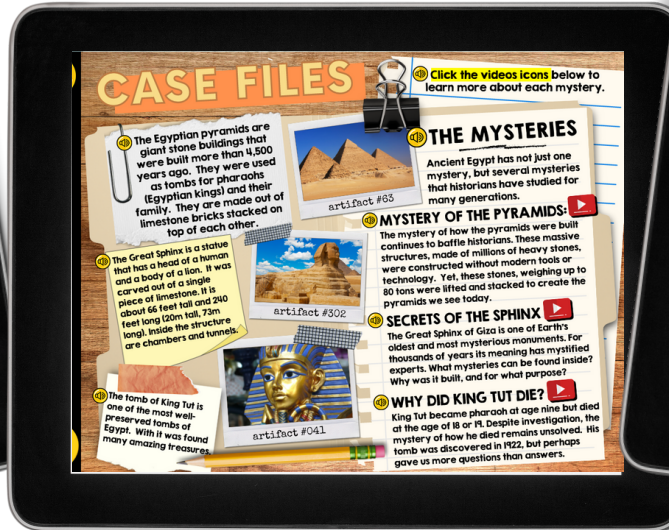




# HISTORY'S BIGGEST MYSTERIES!

Discover intriguing historical mysteries with our History Mystery LINKtivity® Series, designed to unravel some of the most captivating stories that have puzzled people throughout the ages! These kid-favorite LINKtivities work great as fast finishers, at-home learning extensions, highlighting individual student interests, activities for students to complete during school breaks, & more!

Inside the History Mystery: Secrets of Egypt LINKtivity, students will embark on a mesmerizing adventure as they explore how the pyramids were built, why and how the Great Sphinx of Giza was built, and why King Tut died so young. Students will consider a variety of theories that have been developed over the years that help answer some of the puzzling questions surrounding this ancient civilization.





# More Sample Slides

**CLICK HERE For More to Explore!**

**LET'S LEARN ABOUT THE SECRETS OF ANCIENT EGYPT!**  
Click a category below to begin exploring!

**THE SECRETS OF ANCIENT EGYPT**

**CASE FILES** **THE EVIDENCE** **UNDERCOVER** **THEORIES**

**CASE FILES**

**THE MYSTERIES**

Click the videos icons below to learn more about each mystery.

1. The Egyptian pyramids are giant stone buildings that were built more than 4,500 years ago. They were used as tombs for pharaohs (Egyptian kings) and their family. They are made out of limestone bricks stacked on top of each other.

2. The Great Sphinx is a statue that has a head of a human and a body of a lion. It was carved out of a single piece of limestone. It is about 66 feet tall and 240 feet long (20m tall, 73m long). Inside the structure are chambers and tunnels.

3. The tomb of King Tut is one of the most well-preserved tombs of Egypt. With it was found many amazing treasures.

4. Ancient Egypt has not just one mystery, but several mysteries that historians have studied for many generations.

5. **MYSTERY OF THE PYRAMIDS!**  
The mystery of how the pyramids were built continues to baffle historians. These massive structures, made of millions of heavy stones, were constructed without modern tools or technology. Yet, these stones, weighing up to 80 tons were lifted and stacked to create the pyramids we see today.

6. **SECRETS OF THE SPHINX**  
The Great Sphinx of Giza is one of Earth's oldest and most mysterious monuments. For thousands of years its meaning has mystified experts. What mysteries can be found inside? Why was it built, and for what purpose?

7. **WHY DID KING TUT DIE?**  
King Tut became pharaoh at age nine but died at the age of 18 or 19. Despite investigation, the mystery of how he died remains unsolved. His tomb was discovered in 1922, but perhaps gave us more questions than answers.

Over 5,000 years ago, the ancient Egyptians began to make their mark on history. Often leading extravagant lives, they left behind massive structures, a unique written language, and a whole lot of mystery. Mysteries such as how the pyramids were constructed, the purpose of the Great Sphinx, and the cause of King Tut's death have been locked away for thousands of years and still perplex generations today...

Case # 71-209

Click HERE to open this case file

**THE EVIDENCE**

King Tut's tomb was discovered by British archaeologist Howard Carter in 1922. It was the first tomb of an Egyptian pharaoh to be found mostly intact, which means it contained a lot of treasures and artifacts.

Along with his solid gold burial mask, Carter also found furniture, jewelry, clothing, and even food items inside his tomb!

**THE EVIDENCE**

King Tut's burial mask is made out of solid gold. It weighs about 24 pounds and is decorated with precious stones.

The face of the mask features the young pharaoh with eyebrows, eyelashes, and a ceremonial beard.

**THE EVIDENCE**

There are over 100 pyramids in Egypt, but the most famous and well-known pyramids are the ones located on the Giza plateau, near the Nile River.

**THEORIES OF THE PYRAMIDS**

**A RAMP SYSTEM**  
Some people believe that the pyramids were built using a series of ramps that allowed workers to move the massive stones into place. The ramps would have been built at an angle to reduce the amount of force needed to move the stones.

**THEORY 2** **THEORY 3**

The stones of the pyramids were so large and heavy that it's a mystery as to how anyone could move such massive brick without today's technology. Yet, the ancient Egyptians were able to do so. **CLICK** each theory card to learn more.

**UNDERCOVER**

Navigate through the tour by clicking on the arrows.

Each stop on the tour will provide information about that location.

Let's travel to Egypt as it exists today!

We'll be exploring Google Earth so be sure to view the directions on the left so you know how to navigate once we get there!

Click and drag your computer mouse or finger side to side or up and down to see more of the scene.

When you're ready to explore, click the Google Earth icon!

**MORE TO EXPLORE!**

Try these additional activities:

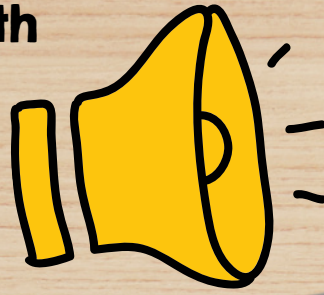
- BUILD A PYRAMID**: We might not know exactly how the Egyptians built the pyramids, but YOU can build one today! **CLICK HERE** for directions.
- READ ABOUT IT!**: The ancient Egyptians mummified their pharaohs. **CLICK HERE** to try out this fun mummification experiment!
- APPLE MUMMY!**: Head to your local library and check out these cool books about Ancient Egypt. **CLICK HERE** for a printable list.
- PODCAST**: Listen to these podcast episodes all about Ancient Egypt!
- DRAWING CHALLENGE**: Learn how to draw the secrets of Egypt with step-by-step video directions. **CLICK HERE** to follow along.





This LINKtivity is provided with

# AUDIO SUPPORT



Perfect for English language learners or students who could use a little extra support!

## CASE FILES

Click the videos icons below to learn more about each mystery.

### THE MYSTERIES

Ancient Egypt has not just one mystery, but several mysteries that historians have studied for many generations.

#### MYSTERY OF THE PYRAMIDS:

The mystery of how the pyramids were built continues to baffle historians. These massive structures, made of millions of heavy stones, were constructed without modern tools or technology. Yet, these stones, weighing up to 80 tons were lifted and stacked to create the pyramids we see today.

#### SECRETS OF THE SPHINX

The Great Sphinx of Giza is one of Earth's oldest and most mysterious monuments. For thousands of years its meaning has mystified experts. What mysteries can be found inside? Why was it built, and for what purpose?

#### WHY DID KING TUT DIE?

King Tut became pharaoh at age nine but died at the age of 18 or 19. Despite investigation, the mystery of how he died remains unsolved. His tomb was discovered in 1922, but perhaps gave us more questions than answers.

The Egyptian pyramids are giant stone buildings that were built more than 4,500 years ago. They were used as tombs for pharaohs (Egyptian kings) and their family. They are made out of limestone bricks stacked on top of each other.

The Great Sphinx is a statue that has a head of a human and a body of a lion. It was carved out of a single piece of limestone. It is about 66 feet tall and 240 feet long (20m tall, 73m long). Inside the structure are chambers and tunnels.

The tomb of King Tut is one of the most well-preserved tombs of Egypt. With it was found many amazing treasures.

artifact #63

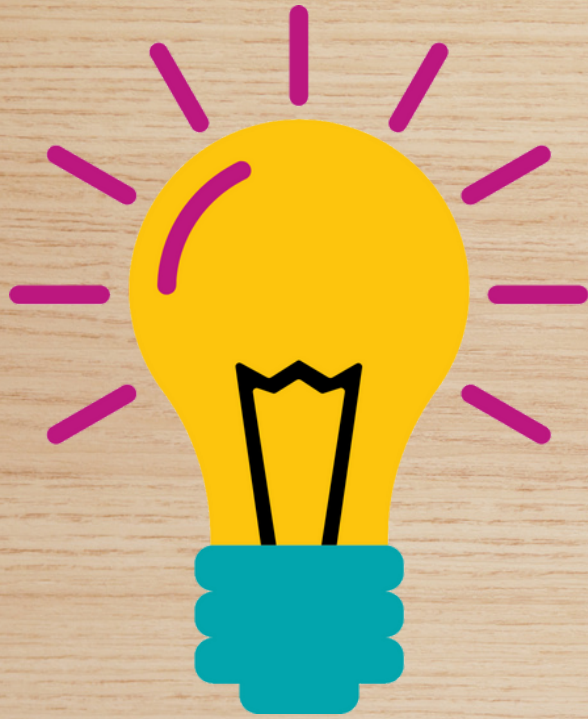
artifact #302

artifact #041





# MORE TO EXPLORE!



Our History's Mysteries LINKtivities also include additional "unplugged" activities that are great for extending the learning at home, for Fun Friday, indoor recess, over school breaks, & MORE!





# Printable & Digital Student Recording Sheet

Printable Recording Sheet  
for LINKtivity

## SECRETS OF EGYPT

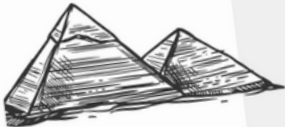
Fast Facts

I think King Tut died because...

I think the pyramids were built by...

I think the Sphinx was built because...

HISTORY'S  
BIGGEST  
MYSTERIES



Digital Recording  
Sheet for  
LINKtivity in  
Google Slides

