

THE GHOST SHIP: MARY CELESTE



L  **INK** **tivity**
Interactive Learning Guides

WAIT!

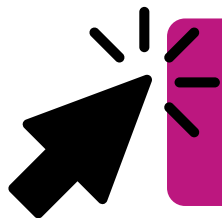
Thank you for considering this LINKtivity for your classroom, but before you make a decision - you should know that you can get **access to this LINKtivity + PLUS our entire library** for about the same price as a single LINKtivity!

The results are in: **Teachers LOVE LINKtivities...** and want more! So, we've made it SUPER easy and cost effective for you to access any and ALL of our LINKtivities inside our LINKtivity Learning membership option! Instead of purchasing just ONE LINKtivity - why not get access to ALL of them... for about the SAME PRICE!



INSIDE THE MEMBERSHIP YOU'LL HAVE UNLIMITED ACCESS TO:

- ✓ The **entire growing LINKtivity® library** inside the Membership (LINKtivities for all content areas)
- ✓ ALL **future LINKtivities** to be added to the membership (new releases each month!)
- ✓ **Teacher guides** to help you set up each LINKtivity® successfully in your classroom
- ✓ **Student resources** that go along with each LINKtivity (printable OR digital)
- ✓ **Kid-friendly rubrics** and **answer keys** for each LINKtivity®



JOIN NOW





HISTORY'S BIGGEST MYSTERIES!

Discover intriguing historical mysteries with our History Mystery LINKtivity® Series, designed to unravel some of the most captivating stories that have puzzled people throughout the ages! These kid-favorite LINKtivities work great as fast finishers, at-home learning extensions, highlighting individual student interests, activities for students to complete during school breaks, & more!

Inside the History Mystery: The Ghost Ship Mary Celeste LINKtivity, students will explore the history and legacy of the Mary Celeste. They'll learn about the crew, the passengers, the cargo of the ship and the events leading up to its disappearance. The LINKtivity will also delve into the various theories and speculations surrounding the fate of the Mary Celeste.



More Sample Slides

GHOST SHIP: Mary Celeste

LET'S LEARN ABOUT THE MYSTERY OF A GHOST SHIP: THE MARY CELESTE: Click a category below to begin exploring!

CLICK HERE for More to Explore!

CASE FILES THE EVIDENCE UNDERCOVER THEORIES

In 1872, in the treacherous waters of the Atlantic Ocean, a ship by the name of Mary Celeste was discovered drifting and abandoned. The ship was in good condition and its valuable cargo remained mostly untouched, but there was something incredibly mysterious and unsettling about the scene - no one was aboard the ship. Despite the extensive investigation that followed, the fate of the crew remains unknown, leaving the world to ponder the eerie event...

Case # 54-006

Click HERE to open this case file

CASE FILES

Click the video icon to learn more

THE MYSTERY

On November 7, the Mary Celeste set sail from New York harbor, heading for Genoa, Italy. Then, on December 4, 1872, the ship was discovered in the middle of the Atlantic Ocean by another ship, the Dei Gratia. The Mary Celeste was found to be in good condition with its cargo and supplies intact, but there was no sign of the crew.

The crew's personal belongings, including their clothes and valuables, were still on the ship, and there were no signs of struggle or violence. The ship's logbook showed that at the Mary Celeste had been sailing smoothly in the days leading up to the discovery, with no indication of any problems or distress. Despite numerous investigations and much speculation, the true fate of the crew of the Mary Celeste remains unknown.

artifact #087

artifact #247

artifact #135

10 The Mary Celeste was actually a cargo ship, not a passenger ship, so there were no passengers aboard the vessel - only crewmates. The ship was carrying cargo from New York to Genoa, Italy when it was discovered abandoned in the Atlantic Ocean in 1872.

11 Ten people were aboard the ship: Captain Benjamin Briggs, his wife, their young daughter, and a crew of seven men.

In 1881, a sail boat named Ellen Austin reportedly discovered a deserted ship in the Bermuda Triangle. The captain of the Ellen Austin decided to tow the ship back to port, but during a storm, the abandoned ship vanished without a trace.

THE EVIDENCE

Click the video icon to learn about how a ship works.

10 The captain of the Mary Celeste was Benjamin Briggs. He was an experienced seaman who had made this voyage before. He had a full understanding of how ships work and had a reputation for being a cautious and careful captain.

He was well-respected by his crew, so it seemed very unlikely for him to abandon the vessel.

THE EVIDENCE

Click the video icon to learn more about the history of the ship.

10 The Mary Celeste set sail from New York on November 7, 1872, bound for Genoa, Italy. The ship was to sail east across the Atlantic Ocean, following the trade winds and the Gulf Stream.

The crew would then navigate through the Azores, a group of islands in the Atlantic, before continuing on to Genoa. Yet, the ship was found adrift in the Atlantic Ocean, approximately 400 miles east of the islands.

THE EVIDENCE

THEORIES

10 The mystery of what happened to the crew of the Mary Celeste has never been fully solved, and several theories have been put forward to explain the occurrence. Click on each card to flip it over and read about some possible theories.

ALCOHOL FUMES!
Some theories suggest that the crew abandoned the ship due to the presence of alcohol fumes from the cargo of industrial alcohol on board. However, this theory is also disputed as there is no evidence to suggest that the crew would have been affected by the fumes.

2 THEORY

3 THEORY

4 THEORY

UNDERCOVER

10 Navigate through the tour by clicking on the arrows

10 Each step will give you more information about the voyage.

10 Let's retrace the fateful voyage of the Mary Celeste.

We'll be exploring Google Earth so be sure to view the directions on the left so you know how to navigate once we get there!

10 Click and drag your computer mouse or finger side to side or up and down to see more of the scene.

10 When you're ready to explore, click the Google Earth icon!

MORE TO EXPLORE!

Try these additional activities:

STEM CHALLENGE
Build a boat and see how much weight it can hold before sinking. [CLICK HERE](#) for directions.

READ ABOUT IT!
Head to your local library and check out these cool books about the Mary Celeste. [CLICK HERE](#) for a printable list.

GHOST STORIES!

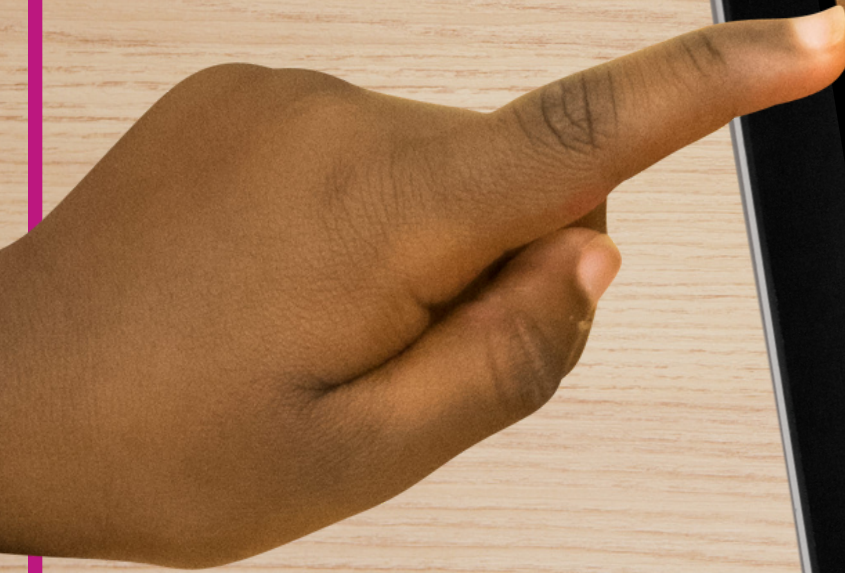
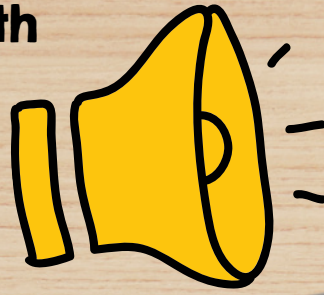
ORAGAMI BOAT!
Learn how to create an origami boat with step-by-step video directions. [CLICK HERE](#) to follow along.

PODCAST!
Listen to these podcast episodes all about the Mary Celeste! [CLICK HERE](#) to see a full list of episodes.



This LINKtivity is provided with

AUDIO SUPPORT



Perfect for English language learners or students who could use a little extra support!

CASE FILES

Click the video icon to learn more

THE MYSTERY

On November 7, the Mary Celeste set sail from New York harbor, heading for Genoa, Italy. Then, on December 4, 1872, the ship was discovered in the middle of the Atlantic Ocean by another ship, the Dei Gratia. The Mary Celeste was found to be in good condition with its cargo and supplies intact, but there was no sign of the crew.

The crew's personal belongings, including their clothes and valuables, were still on the ship, and there were no signs of struggle or violence. The ship's logbook showed that the Mary Celeste had been sailing smoothly in the days leading up to the discovery, with no indication of any problems or distress. Despite numerous investigations and much speculation, the true fate of the crew of the Mary Celeste remains unknown.

Mary Celeste was actually a cargo ship, not a passenger ship, so there were no passengers aboard the vessel - only crewmates. The ship was carrying cargo from New York to Genoa, Italy when it was discovered abandoned in the Atlantic Ocean in 1872.

Ten people were aboard the ship: Captain Benjamin Briggs, his wife, their young daughter, and a crew of seven men.

On November 7, the Mary Celeste set sail from New York harbor, heading for Genoa, Italy. Then, on December 4, 1872, the ship was discovered in the middle of the Atlantic Ocean by another ship, the Dei Gratia. The Mary Celeste was found to be in good condition with its cargo and supplies intact, but there was no sign of the crew.

The crew's personal belongings, including their clothes and valuables, were still on the ship, and there were no signs of struggle or violence. The ship's logbook showed that the Mary Celeste had been sailing smoothly in the days leading up to the discovery, with no indication of any problems or distress. Despite numerous investigations and much speculation, the true fate of the crew of the Mary Celeste remains unknown.

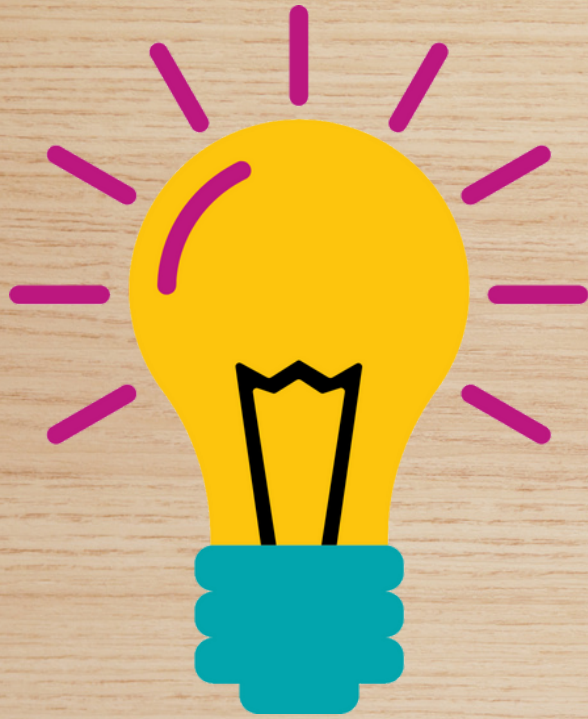
artifact #087

artifact #247

artifact #135



MORE TO EXPLORE!

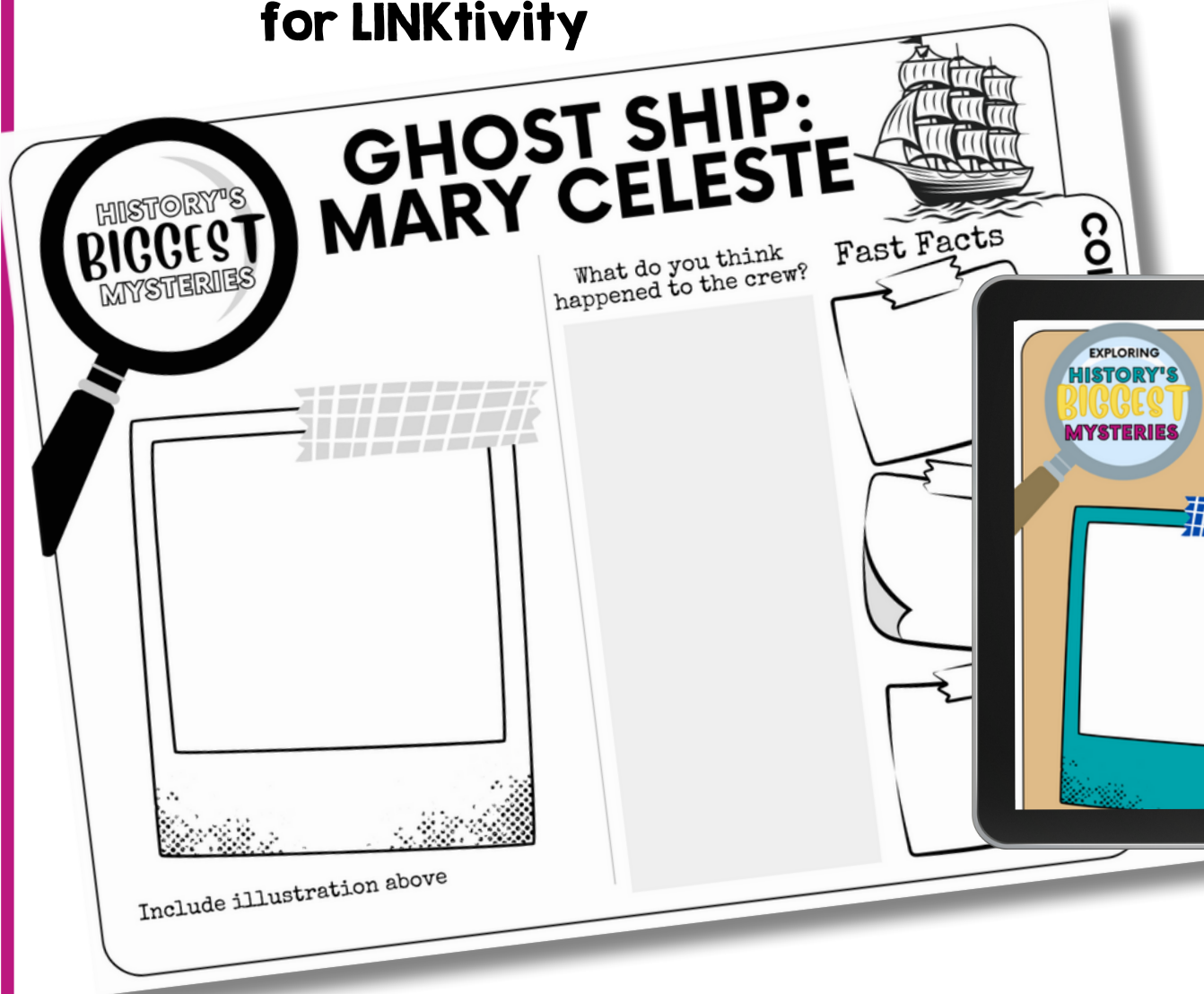


Our History's Mysteries LINKtivities also include additional "unplugged" activities that are great for extending the learning at home, for Fun Friday, indoor recess, over school breaks, & MORE!



Printable & Digital Student Recording Sheet

Printable Recording Sheet
for LINKtivity



Digital Recording
Sheet for
LINKtivity in
Google Slides

