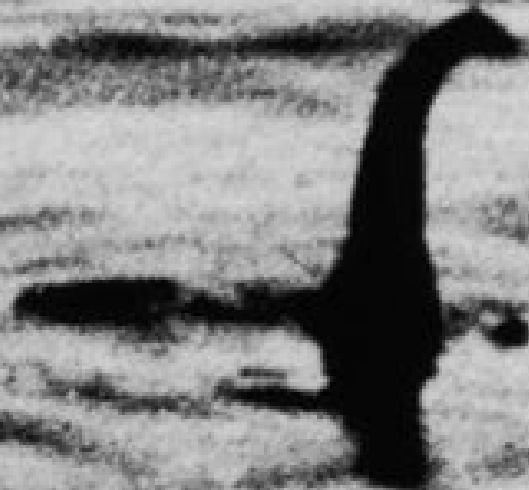


LOCH NESS MONSTER



L  **LNK** **tivity**
Interactive Learning Guides

WAIT!

Thank you for considering this LINKtivity for your classroom, but before you make a decision - you should know that you can get **access to this LINKtivity + PLUS our entire library** for about the same price as a single LINKtivity!

The results are in: **Teachers LOVE LINKtivities...** and want more! So, we've made it SUPER easy and cost effective for you to access any and ALL of our LINKtivities inside our LINKtivity Learning membership option! Instead of purchasing just ONE LINKtivity - why not get access to ALL of them... for about the SAME PRICE!



INSIDE THE MEMBERSHIP YOU'LL HAVE UNLIMITED ACCESS TO:

- ✓ The **entire growing LINKtivity® library** inside the Membership (LINKtivities for all content areas)
- ✓ ALL **future LINKtivities** to be added to the membership (new releases each month!)
- ✓ **Teacher guides** to help you set up each LINKtivity® successfully in your classroom
- ✓ **Student resources** that go along with each LINKtivity (printable OR digital)
- ✓ **Kid-friendly rubrics** and **answer keys** for each LINKtivity®



JOIN NOW

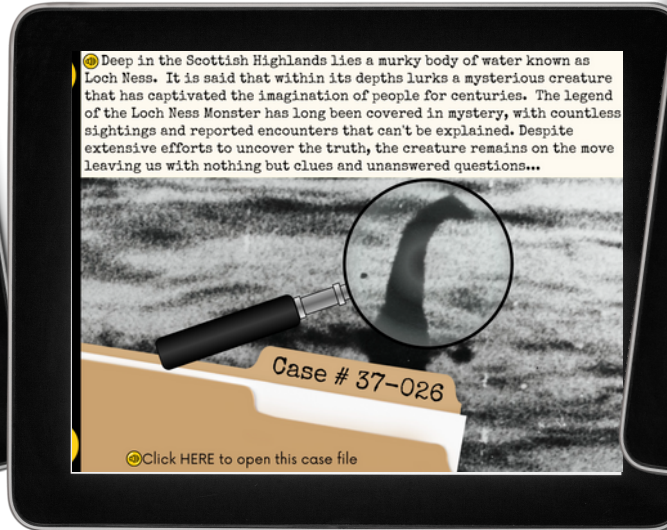




HISTORY'S BIGGEST MYSTERIES!

Discover intriguing historical mysteries with our History Mystery LINKtivity® Series, designed to unravel some of the most captivating stories that have puzzled people throughout the ages! These kid-favorite LINKtivities work great as fast finishers, at-home learning extensions, highlighting individual student interests, activities for students to complete during school breaks, & more!

The History Mystery: Loch Ness Monster LINKtivity, takes students on an interactive journey through the myths, legends, and scientific investigations surrounding the mysterious creature said to inhabit Scotland's Loch Ness. Student will learn about the history of sightings, theories about the creature's existence, and the various attempts to discover the truth behind the legend.



More Sample Slides

CLICK HERE for More to Explore!

LET'S LEARN ABOUT THE MYSTERY OF THE LOCH NESS MONSTER!
Click a category below to begin exploring!

THE LOCH NESS MONSTER

CASE FILES **THE EVIDENCE** **UNDERCOVER THEORIES**

Deep in the Scottish Highlands lies a murky body of water known as Loch Ness. It is said that within its depths lurks a mysterious creature that has captivated the imagination of people for centuries. The legend of the Loch Ness Monster has long been covered in mystery, with countless sightings and reported encounters that can't be explained. Despite extensive efforts to uncover the truth, the creature remains on the move leaving us with nothing but clues and unanswered questions...

Case # 37-026

Click HERE to open this case file

CASE FILES **Click the video icon to learn more**

Scotland is a country in Europe. It is known for its rugged cliffs, mountains, and many lakes.

THE MYSTERY
Loch Ness is a large freshwater lake or "loch" located in the Scottish Highlands, in the northern part of Scotland.

The lake is known for its deep, murky waters and is famous for the legend of the Loch Ness Monster, or Nessie, a mysterious creature that some believe lives the depths of the lake. The first recorded sighting of the monster was in 565 AD. Since then, there have been many reported sightings and encounters with the Loch Ness Monster.

Despite the numerous sightings and encounters, no definitive proof of the Loch Ness Monster's existence has ever been found. While many remain skeptical (doubtful), others continue to believe in the legend and are drawn to the mystery surrounding this creature.

artifact #058 **artifact #162** **artifact #002**

Click the video icon to learn more about the story behind this photo.

In 1933, a couple who were driving near the loch said they saw a big animal with a long neck and a small head walking across the road in front of them.

Not long after, in 1934, a famous photograph was taken, claiming to show the head and neck of the Loch Ness Monster. But many people are not convinced if the picture is real or not.

THE EVIDENCE

The belief about what kind of creature the Loch Ness Monster actually is varies widely. Some believe that it is a prehistoric creature, perhaps a surviving plesiosaur from the Mesozoic Era.

Others think that it is a large eel or fish, or giant catfish, that lives in the dark and murky waters of Loch Ness.

THE EVIDENCE

The first written report of a Loch Ness Monster sighting appears in the biography of a Christian missionary named St. Columba. According to the biography, St. Columba saw the monster try to hurt someone who was swimming.

It is written that Columba ordered the monster to go away and it obeyed.

THE EVIDENCE

THEORIES

PLESIOSAUR
This theory suggests that the Loch Ness Monster is a surviving member of a group of marine reptiles called plesiosaurs, which are believed to have gone extinct millions of years ago. Believers of this theory point to the long neck and hump-like appearance of Nessie as evidence of its plesiosaur-like characteristics.

2 THEORY

3 THEORY

4 THEORY

Although the Loch Ness Monster hasn't been scientifically proven, that hasn't stopped people from trying to spot it or make guesses as to where and why it still exists. Click on each card to flip it over and read about some possible theories.

THEORIES

UNDERCOVER

Navigate through the tour by clicking on the arrows.

Learn more information about the Loch Ness area in Scotland.

Let's travel around the land and water surrounding Loch Ness!

We'll be exploring Google Earth so be sure to view the directions on the left so you know how to navigate once we get there!

Click and drag your computer mouse or finger side to side or up and down to see more of the scene.

When you're ready to explore, click the Google Earth icon!

UNDERCOVER

MORE TO EXPLORE!

Try these additional activities:

MYTHICAL CREATURE
Design your own mythical creature with household items!
CLICK HERE for ideas!

LOCH NESS ORIGAMI
Make a Loch Ness Monster Origami craft. **CLICK HERE for directions!**

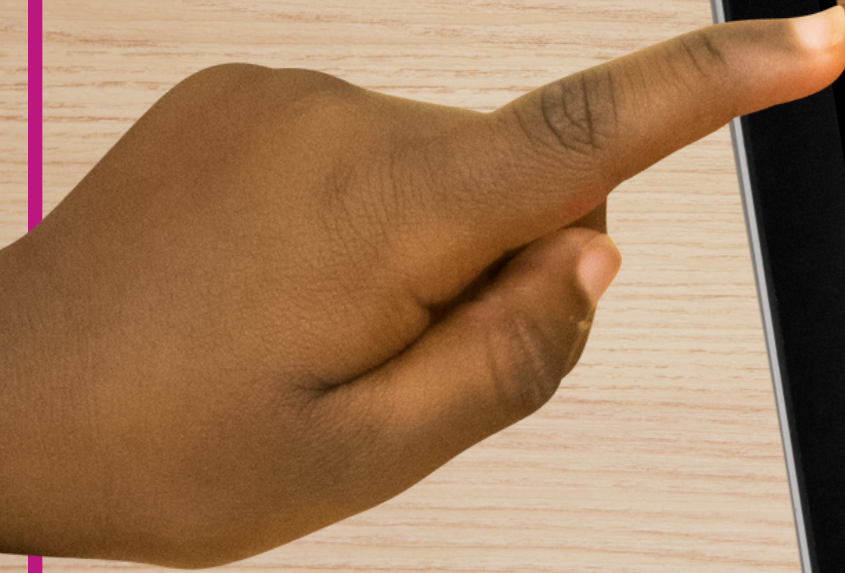
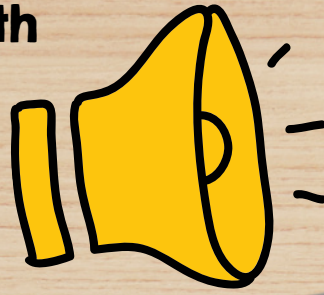
READ ABOUT IT!
Head to your local library and check out these cool books about the Loch Ness Monster. **CLICK HERE for a printable list.**

DRAWING CHALLENGE
Learn how to draw with step-by-step video directions. **CLICK HERE to follow along.**

PODCAST
Listen to these podcast episodes all about the Loch Ness Monster!
CLICK HERE to see a podcast!

This LINKtivity is provided with

AUDIO SUPPORT



CASE FILES



Scotland is a country in Europe. It is known for its rugged cliffs, mountains, and many lakes.

A "loch" is a Scottish word that refers to a lake or a sea inlet, especially one that is long, narrow, and deep, and often surrounded by mountains or hills.



Click the video icon to learn more



THE MYSTERY

Loch Ness is a large freshwater lake or "loch" located in the Scottish Highlands, in the northern part of Scotland.

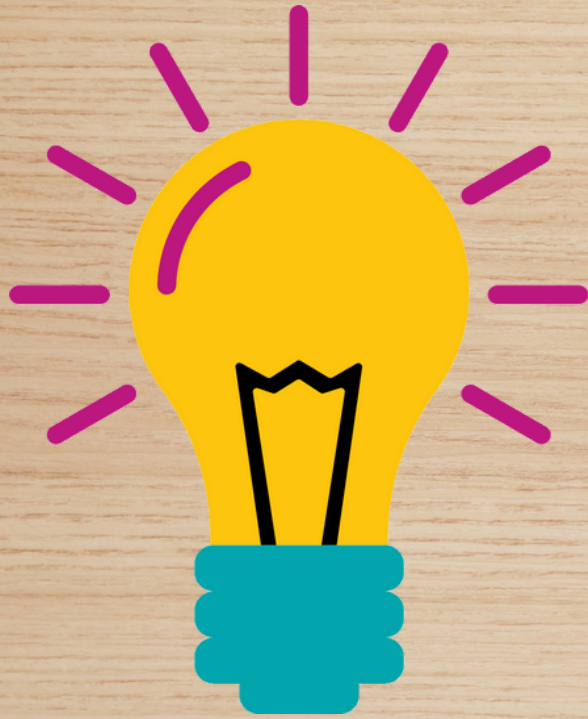
The lake is known for its deep, murky waters and is famous for the legend of the Loch Ness Monster, or Nessie, a mysterious creature that some believe lives the depths of the lake. The first recorded sighting of the monster was in 565 AD. Since then, there have been many reported sightings and encounters with the Loch Ness Monster.

Despite the numerous sightings and encounters, no definitive proof of the Loch Ness Monster's existence has ever been found. While many remain skeptical (doubtful), others continue to believe in the legend and are drawn to the mystery surrounding this creature.

Perfect for English language learners or students who could use a little extra support!



MORE TO EXPLORE!

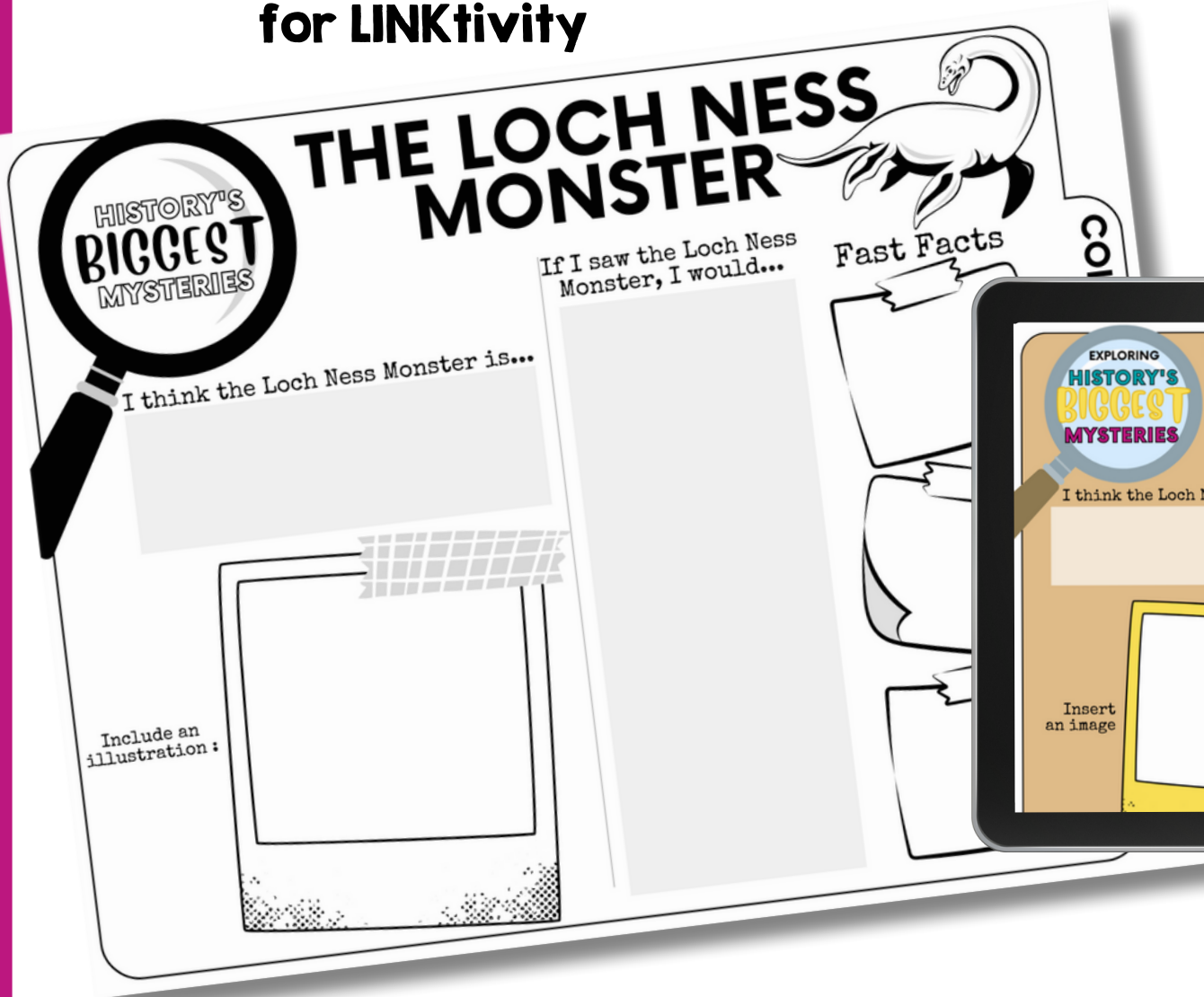


Our History's Mysteries LINKtivities also include additional "unplugged" activities that are great for extending the learning at home, for Fun Friday, indoor recess, over school breaks, & MORE!



Printable & Digital Student Recording Sheet

Printable Recording Sheet for LINKtivity



Digital Recording Sheet for LINKtivity in Google Slides

