

THE GREAT DEPRESSION

Click this icon anywhere you see it to always return to this homepage

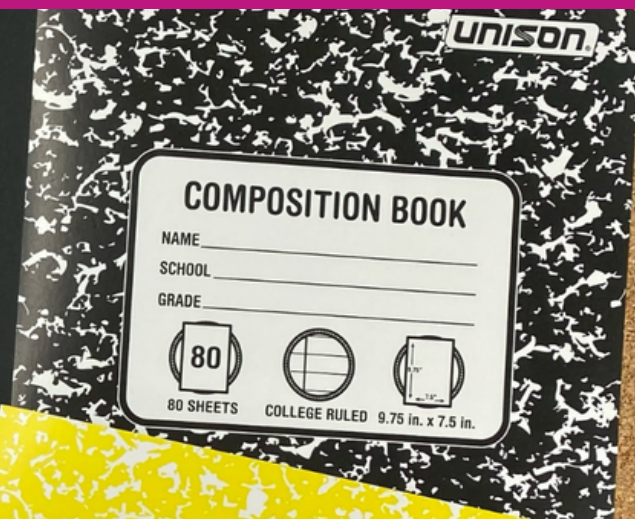
THE GREAT DEPRESSION

Click a topic above to learn more.

When you're done exploring, Click the for the Brain Burst Challenge!

Credits & Sources

BRAIN BURST!



Life During the Great Depression

In each circle on the right, describe some of the challenges faced by people living during The Great Depression.

Answer each question below that relates to the Dust Bowl.

The Dust Bowl

Why

How



LINK tivity
Interactive Learning Guides

WAIT!

Thank you for considering this LINKtivity for your classroom, but before you make a decision - you should know that you can get **access to this LINKtivity + PLUS our entire library** for about the same price as a single LINKtivity!

The results are in: **Teachers LOVE LINKtivities...** and want more! So, we've made it SUPER easy and cost effective for you to access any and ALL of our LINKtivities inside our LINKtivity Learning membership option! Instead of purchasing just ONE LINKtivity - why not get access to ALL of them... for about the SAME PRICE!



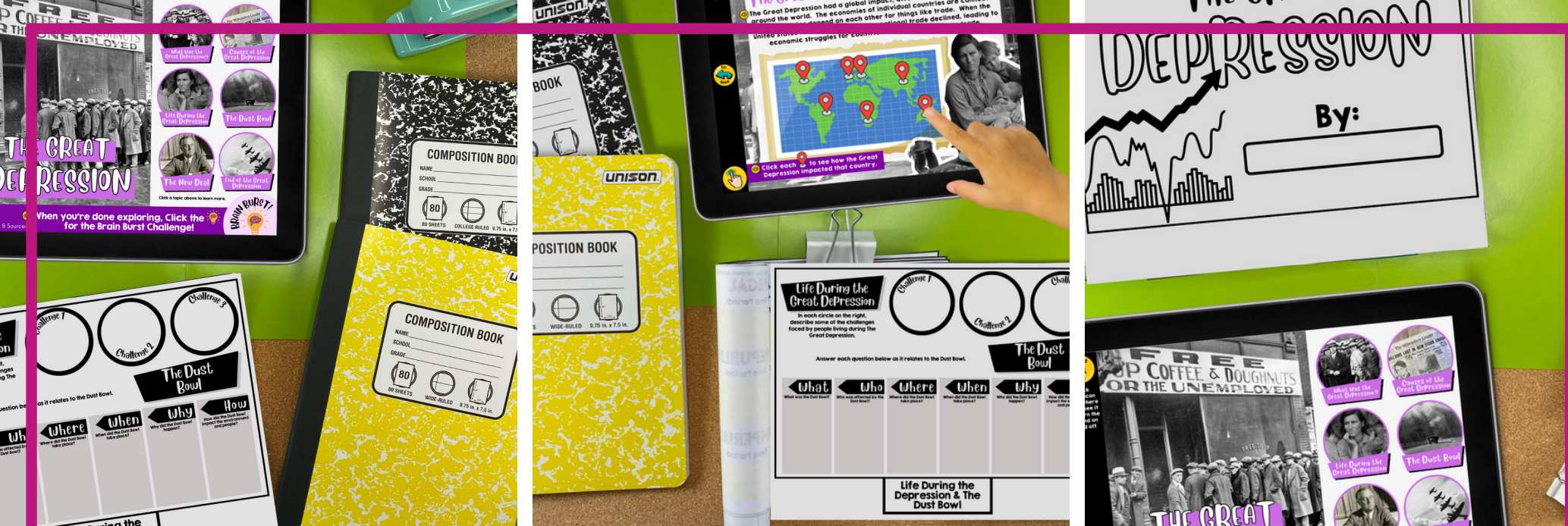
INSIDE THE MEMBERSHIP YOU'LL HAVE UNLIMITED ACCESS TO:

- ✓ The **entire growing LINKtivity® library** inside the Membership (LINKtivities for all content areas)
- ✓ ALL **future LINKtivities** to be added to the membership (new releases each month!)
- ✓ **Teacher guides** to help you set up each LINKtivity® successfully in your classroom
- ✓ **Student resources** that go along with each LINKtivity (printable OR digital)
- ✓ **Kid-friendly rubrics** and **answer keys** for each LINKtivity®

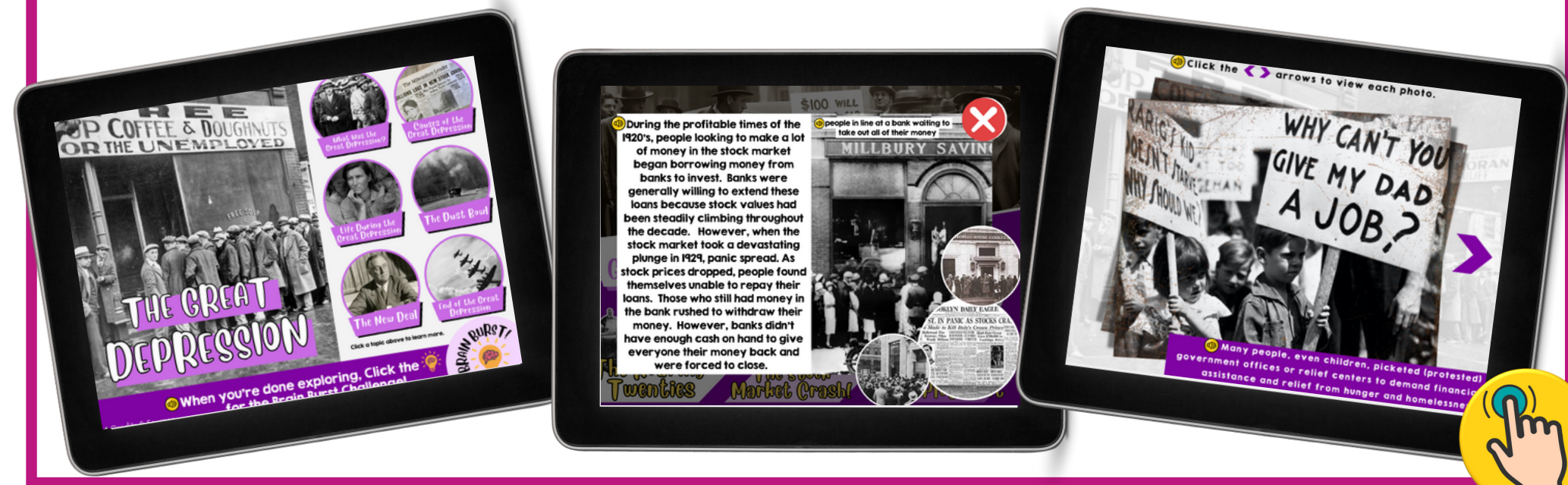


JOIN NOW





Embark on a captivating LINKtivity adventure to explore the tumultuous era of the Great Depression. In this immersive learning experience, students will delve into the heart of this historic period, understanding what the Great Depression was and why it remains a pivotal moment in American history.



More Sample Slides

The Great Depression at a Glance

Click each card on the timeline.

The Great Depression Around the World

The Great Depression had a global impact, affecting numerous countries around the world. The economies of individual countries are connected and countries depend on each other for things like trade. When the United States fell on hard times, international trade declined, leading to economic struggles for countries that relied heavily on trade.

Click each pin to see how the Great Depression impacted that country.

Click the <> arrows to view each photo.

Many people, even children, picketed (protested) government offices or relief centers to demand financial assistance and relief from hunger and homelessness.

During the profitable times of the 1920's, people looking to make a lot of money in the stock market began borrowing money from banks to invest. Banks were generally willing to extend these loans because stock values had been steadily climbing throughout the decade. However, when the stock market took a devastating plunge in 1929, panic spread. As stock prices dropped, people found themselves unable to repay their loans. Those who still had money in the bank rushed to withdraw their money. However, banks didn't have enough cash on hand to give everyone their money back and were forced to close.

people in line at a bank trying to take out all of their money

JOHN'S DAILY EAGLE
SE. IN PANIC AS STOCKS CRASH
The Bank of America Closed Tuesday

The New Deal

In 1933, Franklin D. Roosevelt was elected President of the United States. He came into office at the height of the Great Depression and was tasked with solving many of the country's economic problems. Roosevelt soon began putting into place a series of programs to help Americans. These programs became known as the New Deal.

Learn more about some of these programs by clicking each box below.

- CIVILIAN CONSERVATION CORPS
- TENNESSEE VALLEY AUTHORITY
- WORKS PROGRESS ADMINISTRATION
- SOCIAL SECURITY ACT

Click on the biography icon to learn more about Franklin D. Roosevelt

The Dust Bowl

Times were already hard during the Great Depression. However another crisis began in the Midwest that made matters worse. A severe drought that became known as the Dust Bowl caused farmland to dry up and turn to dust.

What was the Dust Bowl?

The Dust Bowl was a devastating environmental disaster that led to many families losing their farms and homes. During the 1930s, extremely dry weather cause farming soil to dry up in the hot sun. High winds then caused the sandy soil to scatter, destroying crops and creating dust storms that covered the region. These storms were so big that they covered everything and looked like a big, dark cloud of dust.

What

- Who
- Where
- When
- Why
- How

What Was the Great Depression?

The Great Depression was a very tough time in the United States. It lasted for several years, beginning in 1929 and continuing through the 1930's. During this period, many people lost their jobs and had a hard time finding enough food and money to live. It was called a "depression" because people felt sad and worried about the future. There was less money to go around, and life was really challenging for many families. This difficult time lasted for several years until the country started to get better with the help of some important government programs.

Click the video icon to learn more

BRAIN BURST!

Test your knowledge of the Great Depression by completing each activity below.

- MATCH IT UP!
- TRUE OR FALSE?
- CAUSE & EFFECT

End of the Great Depression

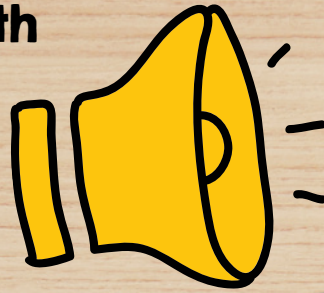
World War II played a significant role in ending the Great Depression. When the war began, the United States shifted its focus to producing weapons, equipment, and supplies for the military effort. This massive production effort created millions of jobs and boosted economic growth. Many people who were unemployed during the Great Depression found work in the war industries. Additionally, the government invested heavily in the war effort, and people had more money to spend. All these factors combined to lift the country out of the economic hardships of the Great Depression. So, while the war brought its own challenges, it also provided a much-needed economic boost.

The United States joined WWII in 1941 and was bombed by the Japanese at Pearl Harbor



This LINKtivity is provided with

AUDIO SUPPORT



Perfect for English language learners or students who could use a little extra support!

The tablet screen shows a historical video of a man in a suit driving a car, with a sign that reads: "\$100. WILL BUY THIS CAR. MUST HAVE CASH. LOST ALL ON THE STOCK MARKET".

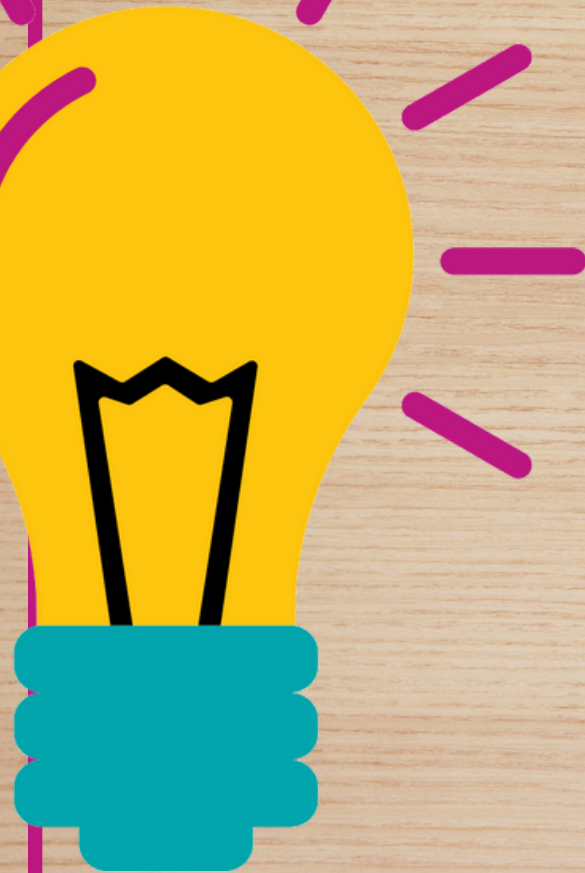
Below the video is a purple interactive menu titled "Causes of the Great Depression". It features several clickable items, each with an audio icon:

- Roaring Twenties
- The Stock Market Crash!
- Banks Close
- Unemployment

A hand is shown pointing at the "The Stock Market Crash!" item. In the bottom right corner of the tablet interface, there is a yellow circular icon of a hand with a blue dot, indicating a clickable element.



KNOWLEDGE CHECK



Students complete a quick self-check at the end of the LINKtivity to show what they have learned!

Test your knowledge of the Great Depression by completing each activity below.

MATCH IT UP!

TRUE OR FALSE?

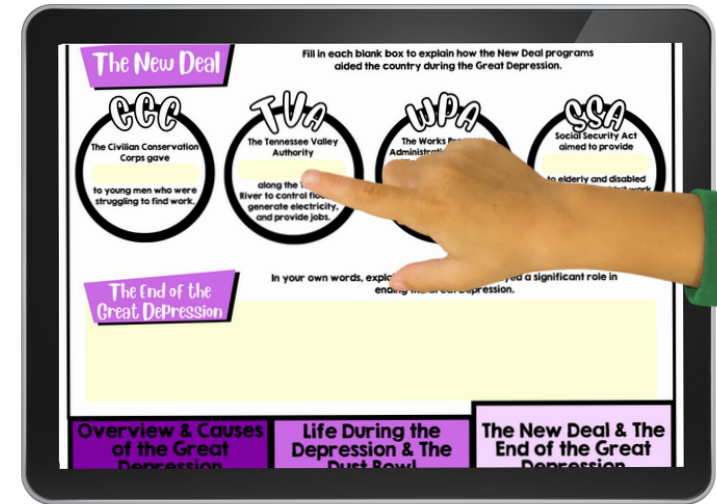
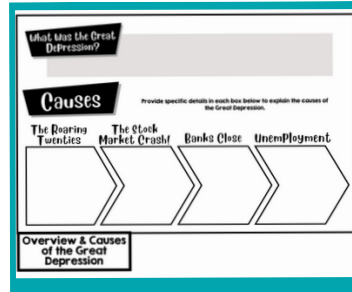
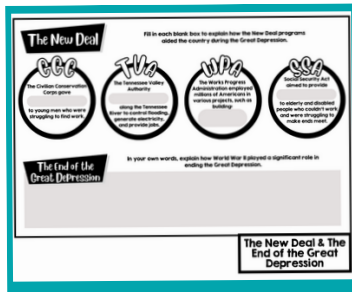
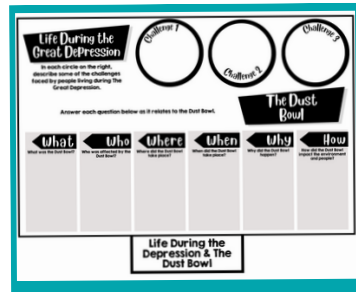
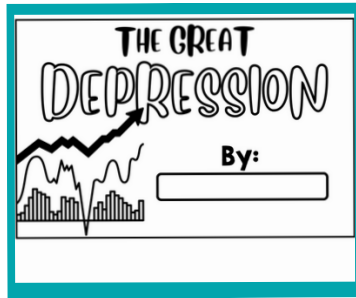
CAUSE & EFFECT

WHY CAN'T YOU GIVE MY DAD A JOB?



Printable & Digital Student Flipbook

Printable Flipbook for LINKtivity



Digital Flipbook for LINKtivity in Google Slides

Student Flipbook Rubric		Student:		
LINKtivity	4 - Excellent	3 - Good	2 - Satisfactory	
Neatness & Appearance	My Flipbook is neat and easy to read. I neatly colored in any illustrations with great detail. It is clear that I took my time to make my Flipbook reflect my learning.	The information in my Flipbook is mostly correct. I've included several details from the LINKtivity and have put what I've learned clearly in my own words. I have included information that goes above and beyond.	My Flipbook is somewhat neat. Some of my writing is hard to read. I colored in any illustrations.	My Flipbook is quite sloppy. My writing is hard to read. Illustrations are NOT colored, or are sloppily done.
Accuracy & Completeness	The information in my Flipbook is 100% correct. I've included many details from the LINKtivity and have put what I've learned clearly in my own words. I have included information that goes above and beyond.	The information in my Flipbook is mostly correct. I've included several details from the LINKtivity and have put what I've learned clearly in my own words. I have included information that goes above and beyond.	My Flipbook contains several incorrect or missing pieces of information. I struggled to use the information from the LINKtivity to complete my Flipbook correctly.	My Flipbook has many incorrect or missing pieces of information. I struggled to use the information from the LINKtivity to complete my Flipbook correctly.
			My Flipbook contains many errors in spelling and grammar.	

Answer Key & Rubric

