

ANCIENT CIVILIZATIONS: EGYPT



LINKtivity
Interactive Learning Guides

WAIT!

Thank you for considering this LINKtivity for your classroom, but before you make a decision - you should know that you can get **access to this LINKtivity + PLUS our entire library** for about the same price as a single LINKtivity!

The results are in: **Teachers LOVE LINKtivities...** and want more! So, we've made it SUPER easy and cost effective for you to access any and ALL of our LINKtivities inside our LINKtivity Learning membership option! Instead of purchasing just ONE LINKtivity - why not get access to ALL of them... for about the SAME PRICE!



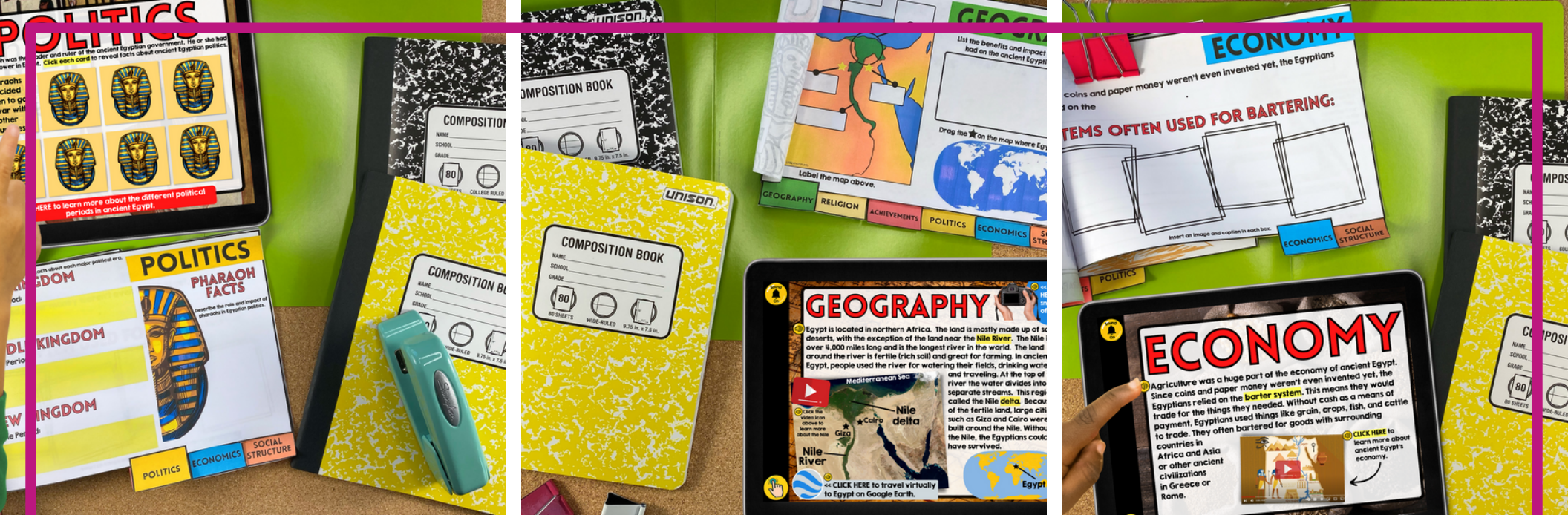
INSIDE THE MEMBERSHIP YOU'LL HAVE UNLIMITED ACCESS TO:

- ✓ The **entire growing LINKtivity® library** inside the Membership (LINKtivities for all content areas)
- ✓ ALL **future LINKtivities** to be added to the membership (new releases each month!)
- ✓ **Teacher guides** to help you set up each LINKtivity® successfully in your classroom
- ✓ **Student resources** that go along with each LINKtivity (printable OR digital)
- ✓ **Kid-friendly rubrics** and **answer keys** for each LINKtivity®

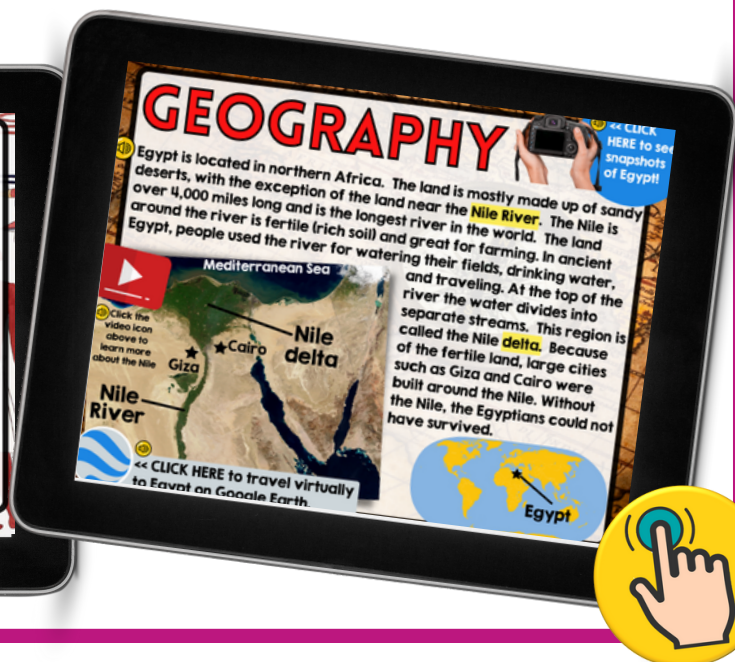


JOIN NOW





Inside the Ancient Egypt LINKtivity® students will learn about the ancient Egyptian civilizations including the impact of its geographic location, religious beliefs, major achievements, political structure, economic system, and social structure. They will also have the opportunity to view related videos before completing the knowledge self-check.



More Sample Slides

POLITICS

The Pharaoh was the leader and ruler of the ancient Egyptian government. He or she had the most power in Egypt. Click each card to reveal facts about ancient Egyptian politics.

Pharaohs decided when to go to war with other countries.

CLICK HERE to learn more about the different political periods in ancient Egypt.

GEOGRAPHY

Drag each card to the correct sentence.

Large cities developed along the _____

The Nile River provided fertile soil for _____

The _____ is found at the top of the river where water divides into separate _____

Egypt is located in _____

streams Africa Nile River Nile Delta farming

CLICK HERE to Check Your Answers

UNDO RESET

SPHINX

Near the pyramids of Giza is another mysterious structure. It is called the **Great Sphinx**. This monument has the body of a lion and the face of a king. The Sphinx was carved out of limestone and is 65 feet high and 200 feet long. For centuries, the Sphinx was buried in sand from the neck down. In 1925 it was dug out to reveal the rest of the body. Since then, the statue has begun to crumble because of the wind and air.

CLICK HERE to learn more about the Sphinx.

UNDO RESET

THE AFTERLIFE

When someone died in ancient Egypt, they were buried with things that they could use in the afterlife. Egyptians were buried with items like jewelry, furniture, clothing, weapons, and tools. Rich people and kings often built large tombs to hold these items.

Egyptian tomb

They also believed that they would need their bodies in the afterlife. They made the body into a **mummy** so that it would last a long time. Bodies were dried and body organs were removed and placed in special jars. The body was filled with salt to help dry and preserve it. Then, the body was wrapped in linen strips before placing it in the **tomb**.

CLICK HERE to learn more about mummies.

SOCIAL STRUCTURE

Ancient Egyptians used a class system to organize and structure the members of their society. Every person had a role to help keep their society strong. Daily life and responsibilities depended on the class that a person was part of.

Pharaohs

scribes, nobles, priests

farmers, workers, craftsmen

slaves

CLICK HERE to learn more about daily life in ancient Egypt.

CLICK ON EACH CLASS TO LEARN ABOUT DAILY LIFE FOR EACH GROUP OF EGYPTIANS.

RELIGION

The Egyptians believed in many different **gods and goddesses**. They were usually related to nature or animals and their bodies were often half-animal and half-human. Egyptians also believed that their leaders, known as **Pharaohs**, belonged to the family of gods. Egyptians made statues of the gods and goddesses to honor them. They also built temples and celebrated them with gifts.

RA OSIRIS ISIS HORUS ANUBIS

CLICK HERE to learn more about the afterlife.

CLICK ON EACH GOD OR GODDESS TO LEARN MORE.

Egyptians believed in the **afterlife**. After death, they believed their bodies and spirits lived on.

GEOGRAPHY

Egypt is located in northern Africa. The land is mostly made up of sandy deserts, with the exception of the land near the **Nile River**. The Nile is over 4,000 miles long and is the longest river in the world. The land around the river is fertile (rich soil) and great for farming. In ancient Egypt, people used the river for watering their fields, drinking water, and traveling. At the top of the river the water divides into separate streams. This region is called the **Nile delta**. Because of the fertile land, large cities such as Giza and Cairo were built around the Nile. Without the Nile, the Egyptians could not have survived.

CLICK HERE to see snapshots of Egypt!

CLICK THE VIDEO ICON ABOVE TO LEARN MORE ABOUT THE NILE.

CLICK HERE to travel virtually to Egypt on Google Earth.

HIEROGLYPHS

Egyptian priests created a unique way of writing called **hieroglyphics**. This writing was made up of pictures and shapes that stood for sounds, ideas, and other things. Egyptians would carve these images into the stone on temples and monuments.

Over time, Egyptian **scribes** began using another material for writing. It was a kind of paper called **papyrus**. Papyrus was made from tall plant reeds that grew by the Nile.

CLICK HOW DO WE KNOW WHAT THE HIEROGLYPHS MEAN? CLICK HERE TO FIND OUT!

VOCABULARY

an Egyptian king **pharaoh**

a deceased body preserved and wrapped in linen. **scribe**

Egyptian writing made up of symbols and pictures. **mummy**

a stone engraved with both Egyptian and Greek writing. **papyrus**

paper made from plant reeds. **barter system**

a person wrote using hieroglyphs. **Rosetta**

the economic system Egyptians relied on to trade for goods and services. **hieroglyphics**

Drag each word card to the correct definition.

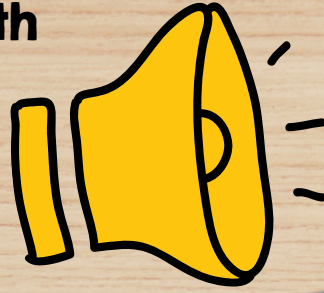
CLICK HERE to Check Your Answers

UNDO



This LINKtivity is provided with

AUDIO SUPPORT



Perfect for English language learners or students who could use a little extra support!

GEOGRAPHY

Egypt is located in northern Africa. The land is mostly made up of sand deserts, with the exception of the land near the Nile River. The Nile is over 4,000 miles long and is the longest river in the world. The land around the river is fertile (rich soil) and great for farming. In ancient Egypt, people used the river for watering their fields, drinking water, and traveling. At the top of the river the water divides into separate streams. This region is called the Nile delta. Because of the fertile land, large cities such as Giza and Cairo were built around the Nile. Without the Nile, the Egyptians could not have survived.

Mediterranean Sea

Nile delta

Cairo

Giza

Nile River

Egypt

Sound On

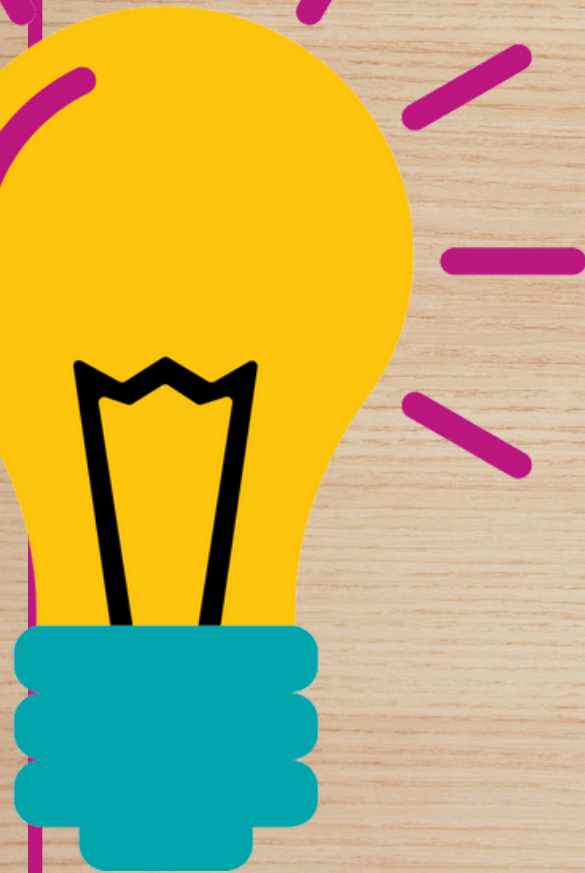
Click the video icon above to learn more about the Nile

<< CLICK HERE to travel virtually to Egypt on Google Earth.

<< CLICK HERE snap of Eg



KNOWLEDGE CHECK



Students complete a quick self-check at the end of the LINKtivity to show what they have learned!

Drag each card to the correct sentence.

Large cities developed along the .

The Nile River provided fertile soil for .

The is found at the top of the river where water divides into separate .

Egypt is located in .

streams **Africa** **Nile River**
Nile Delta **farming**

[CLICK HERE Check Your Answers](#)

[UNDO](#)

GEOGRAPHY

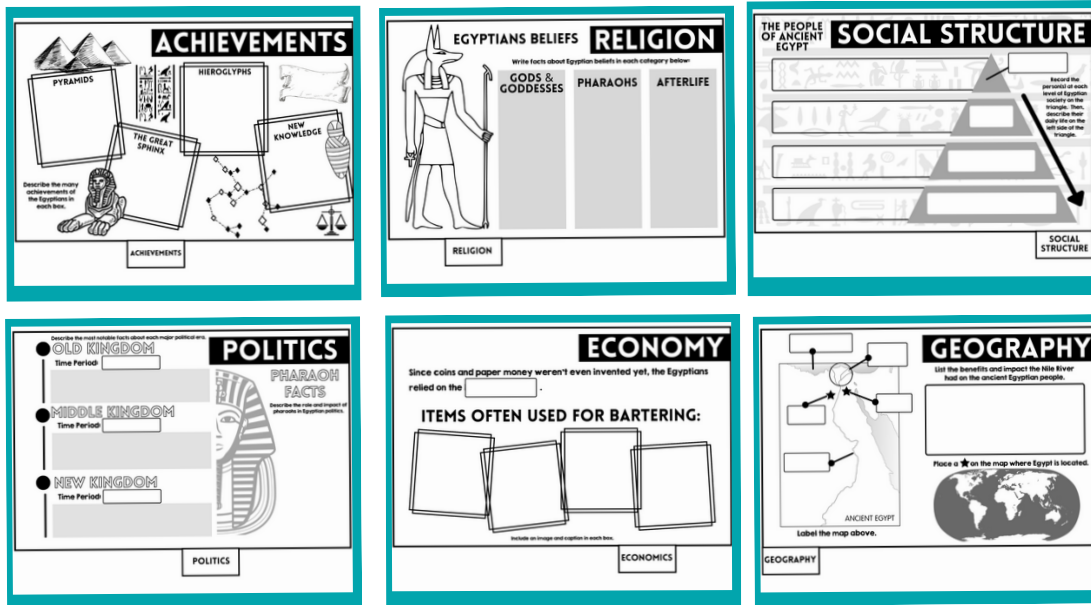
Sound On

Hand cursor icon



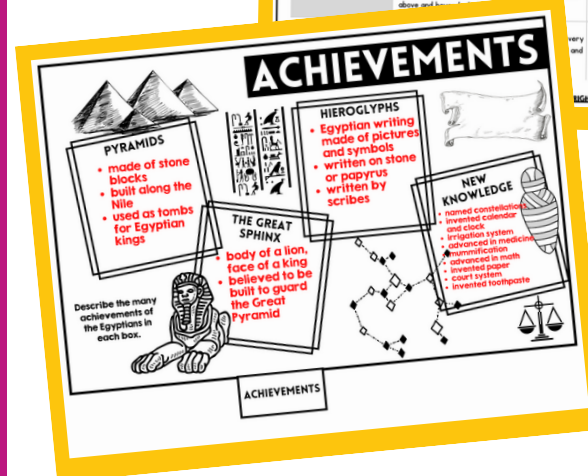
Printable & Digital Student Flipbook

Printable Flipbook for LINKtivity



Digital Flipbook for LINKtivity in Google Slides

Student Flipbook Rubric				Student:
LINKtivity Differentiated Learning Outcomes	4 - Excellent	3 - Good	2 - Satisfactory	1 - Needs Improvement
Neatness & Appearance	My Flipbook is very neat and easy to read. I neatly colored in any illustrations with great detail. It is clear that I took my time to make my Flipbook reflect my learning.	My Flipbook is mostly correct. I've included many details from the LINKtivity and have put what I've learned clearly in my own words. I have included information that goes above and beyond.	My Flipbook is somewhat neat. Some of my writing is hard to read. Illustrations are not clear, or are sloppily done.	My Flipbook is quite sloppy. My writing is hard to read. Illustrations are NOT clear, or are sloppily done.
Accuracy & Completeness	The information in my Flipbook is 100% correct. I've included many details from the LINKtivity and have put what I've learned clearly in my own words. I have included information that goes above and beyond.	The information in my Flipbook is mostly correct. I've included several details from the LINKtivity, written neatly in my own words. My Flipbook includes all of the required information.	My Flipbook contains several incorrect or missing pieces of information. The information in my Flipbook lacks details from the LINKtivity.	My Flipbook has many incorrect or missing pieces of information. I struggled to use the information from the LINKtivity to complete my Flipbook correctly.
			My Flipbook contains many errors in spelling and grammar.	My Flipbook contains many errors in spelling and grammar.



Answer Key & Rubric

