

BERMUDA TRIANGLE



LNK  **tivity**
Interactive Learning Guides

WAIT!

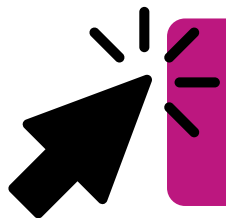
Thank you for considering this LINKtivity for your classroom, but before you make a decision - you should know that you can get **access to this LINKtivity + PLUS our entire library** for about the same price as a single LINKtivity!

The results are in: **Teachers LOVE LINKtivities...** and want more! So, we've made it SUPER easy and cost effective for you to access any and ALL of our LINKtivities inside our LINKtivity Learning membership option! Instead of purchasing just ONE LINKtivity - why not get access to ALL of them... for about the SAME PRICE!



INSIDE THE MEMBERSHIP YOU'LL HAVE UNLIMITED ACCESS TO:

- ✓ The **entire growing LINKtivity® library** inside the Membership (LINKtivities for all content areas)
- ✓ ALL **future LINKtivities** to be added to the membership (new releases each month!)
- ✓ **Teacher guides** to help you set up each LINKtivity® successfully in your classroom
- ✓ **Student resources** that go along with each LINKtivity (printable OR digital)
- ✓ **Kid-friendly rubrics** and **answer keys** for each LINKtivity®



JOIN NOW

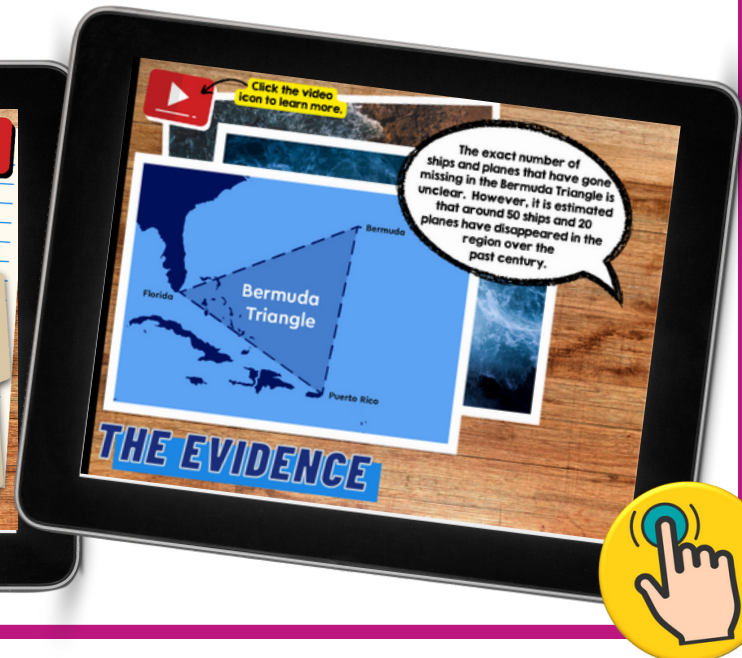
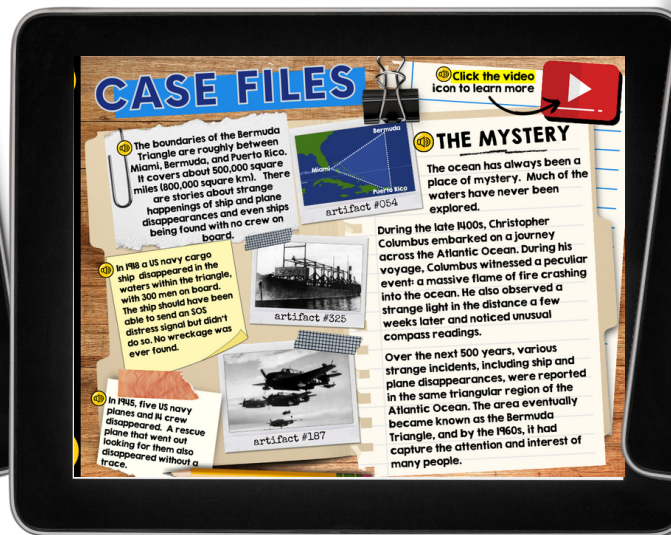




HISTORY'S BIGGEST MYSTERIES!

Discover intriguing historical mysteries with our History Mystery LINKtivity® Series, designed to unravel some of the most captivating stories that have puzzled people throughout the ages! These kid-favorite LINKtivities work great as fast finishers, at-home learning extensions, highlighting individual student interests, activities for students to complete during school breaks, & more!

Inside the History Mystery: Bermuda Triangle LINKtivity, students will explore the myths, legends, and theories behind the mysteries of the region. Students will learn about some of the most famous disappearances in the region including Flight 19, the USS Cyclops, and more!



More Sample Slides

CLICK HERE For More to Explore!

LET'S LEARN ABOUT THE MYSTERY OF THE BERMUDA TRIANGLE!
Click a category below to begin exploring!

THE BERMUDA TRIANGLE

CASE FILES **THE EVIDENCE** **UNDERCOVER** **THEORIES**

CASE FILES **Click the video icon to learn more**

THE MYSTERY

The boundaries of the Bermuda Triangle are roughly between Miami, Bermuda, and Puerto Rico. It covers about 500,000 square miles (800,000 square km). There are stories about strange happenings of ship and plane disappearances and even ships being found with no crew on board.

In 1918 a US navy cargo ship disappeared in the waters within the triangle, with 300 men on board. The ship should have been able to send an SOS distress signal but didn't do so. No wreckage was ever found.

In 1945, five US navy planes and 14 crew disappeared. A rescue plane that went out looking for them also disappeared without a trace.

During the late 1400s, Christopher Columbus embarked on a journey across the Atlantic Ocean. During his voyage, Columbus witnessed a peculiar event: a massive flame of fire crashing into the ocean. He also observed a strange light in the distance a few weeks later and noticed unusual compass readings.

Over the next 500 years, various strange incidents, including ship and plane disappearances, were reported in the same triangular region of the Atlantic Ocean. The area eventually became known as the Bermuda Triangle, and by the 1960s, it had captured the attention and interest of many people.

artifact #054
artifact #325
artifact #187

THE EVIDENCE

In March 1918, the USS Cyclops, shown here in the Hudson River, New York in 1911, disappeared in the vicinity of the Bermuda Triangle.

Despite efforts to locate it, the wreckage has never been discovered, and no survivors were found.

Click the video icon to dive into the ocean and explore a ship wreck in the Bermuda Triangle.

Many divers have gone deep into the oceans to visit some of the ships that have sunk near and around the Bermuda Triangle.

THE EVIDENCE

Click the video icon to learn more about this disappearance.

In December 1945, a group of five U.S. Navy torpedo bombers vanished during a training mission in the Bermuda Triangle. The planes and their 14 crew members were never found.

THE EVIDENCE

THE EVIDENCE

In 1881, a sail boat named Ellen Austin reportedly discovered a deserted ship in the Bermuda Triangle. The captain of the Ellen Austin decided to tow the ship back to port, but during a storm, the abandoned ship vanished without a trace.

THEORIES

HUMAN ERROR
One theory suggests that many of the disappearances in the Bermuda Triangle can be attributed to human error, such as navigational mistakes, mechanical failures, and other factors.

2 THEORY

3 THEORY **4 THEORY** **5 THEORY**

Although the Bermuda Triangle is not officially recognized as a danger zone, people still try to find explanations for the many disappearances of ships and planes over the area. Click on each card to flip it over and read about some possible theories.

UNDERCOVER

Navigate through the tour by clicking on the arrows.

See the sites in and around the Bermuda Triangle.

Let's travel over the land and water surrounding the Bermuda Triangle!

We'll be exploring Google Earth so be sure to view the directions on the left so you know how to navigate once we get there!

Click and drag your computer mouse or finger side to side or up and down to see more of the scene.

Table of Contents < 3 / 10 >

over to Bermuda

← When you're ready to explore, click the Google Earth icon!

MORE TO EXPLORE!

SHIP WRECK DETECTIVE
Although many boats and ships have seemed to disappear in and around the Bermuda Triangle, there are many ship wrecks that HAVE been found in the area.
CLICK HERE to become a ship wreck detective!

READ ABOUT IT!
Head to your local library and check out these cool books about The Bermuda Triangle.
CLICK HERE for a printable list.

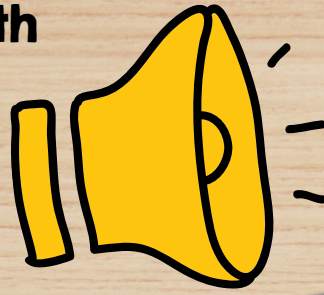
I SURVIVED THE BERMUDA TRIANGLE!
Imagine you are on a trip that requires you to travel through the Bermuda Triangle. You run into some problems... but you survive.
CLICK HERE to start your adventure.

MAGNETIC SLIME!
Some theories suggest that the Bermuda Triangle is home to powerful magnetic fields that pull ships and planes into the ocean. See this theory in action by making magnetic slime!
CLICK HERE for directions.

PODCAST
Listen to these podcast episodes all about the Bermuda Triangle!
CLICK HERE to see a podcast.

This LINKtivity is provided with

AUDIO SUPPORT



CASE FILES



The boundaries of the Bermuda Triangle are roughly between Miami, Bermuda, and Puerto Rico. It covers about 500,000 square miles (800,000 square km). There are stories about strange happenings of ship and plane disappearances and even ships being found with no crew on board.



artifact #054

In 1918 a US navy cargo ship disappeared in the waters within the triangle, with 300 men on board. The ship should have been able to send an SOS distress signal but didn't do so. No wreckage was ever found.



artifact #325

In 1945, five US navy planes and 14 crew disappeared. A rescue plane that went out looking for them also disappeared without a trace.



artifact #187

Click the video icon to learn more



THE MYSTERY

The ocean has always been a place of mystery. Much of the waters have never been explored.

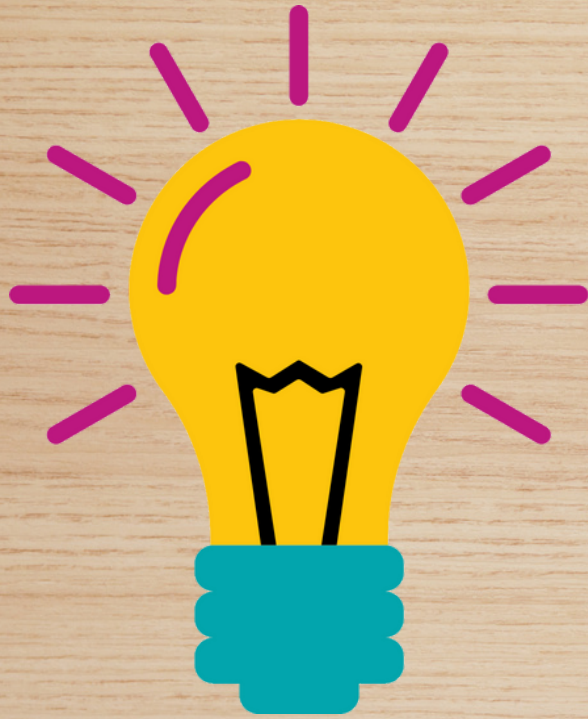
During the late 1400s, Christopher Columbus embarked on a journey across the Atlantic Ocean. During his voyage, Columbus witnessed a peculiar event: a massive flame of fire crashing into the ocean. He also observed a strange light in the distance a few weeks later and noticed unusual compass readings.

Over the next 500 years, various strange incidents, including ship and plane disappearances, were reported in the same triangular region of the Atlantic Ocean. The area eventually became known as the Bermuda Triangle, and by the 1960s, it had capture the attention and interest of many people.

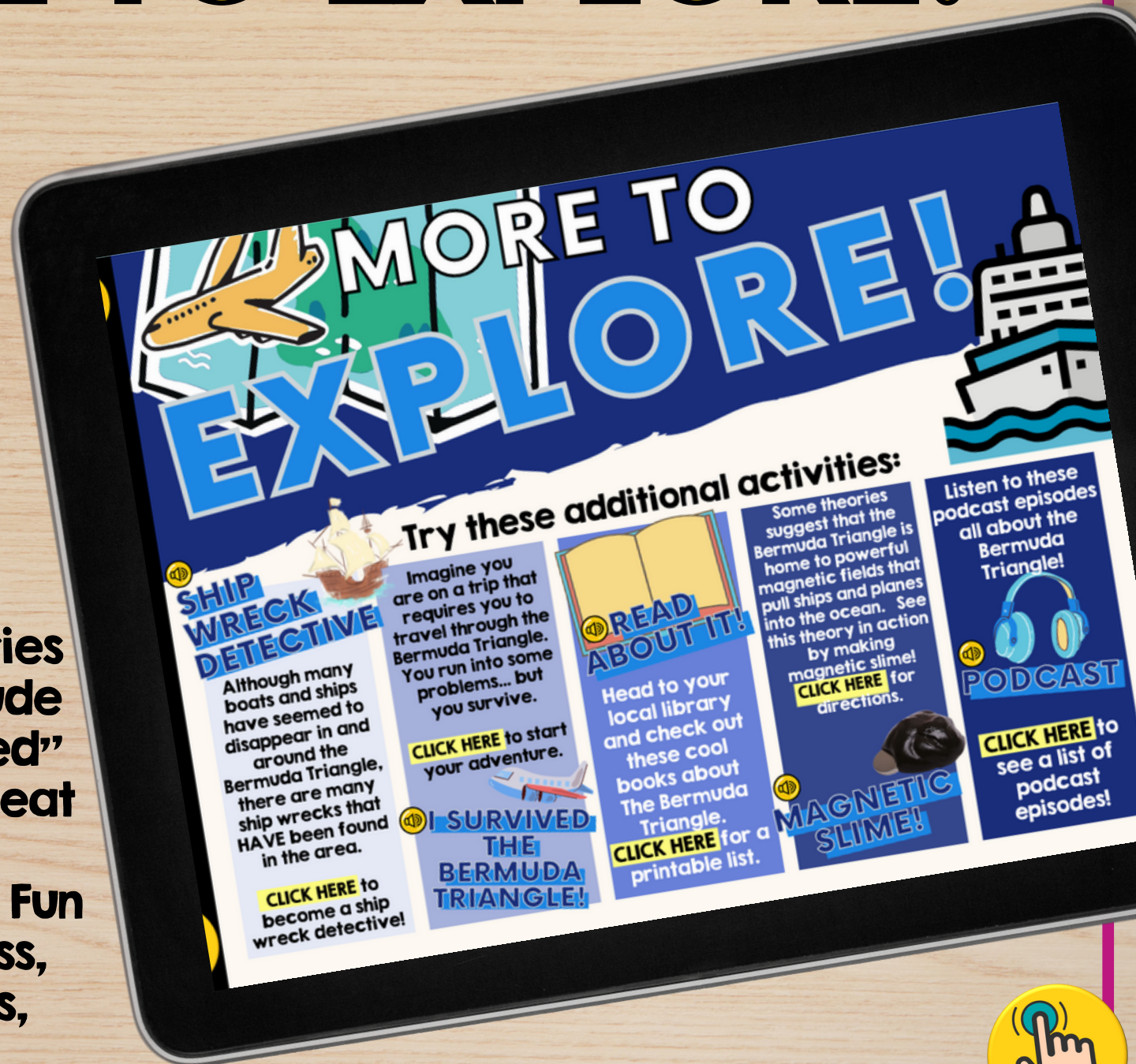
Perfect for English language learners or students who could use a little extra support!



MORE TO EXPLORE!

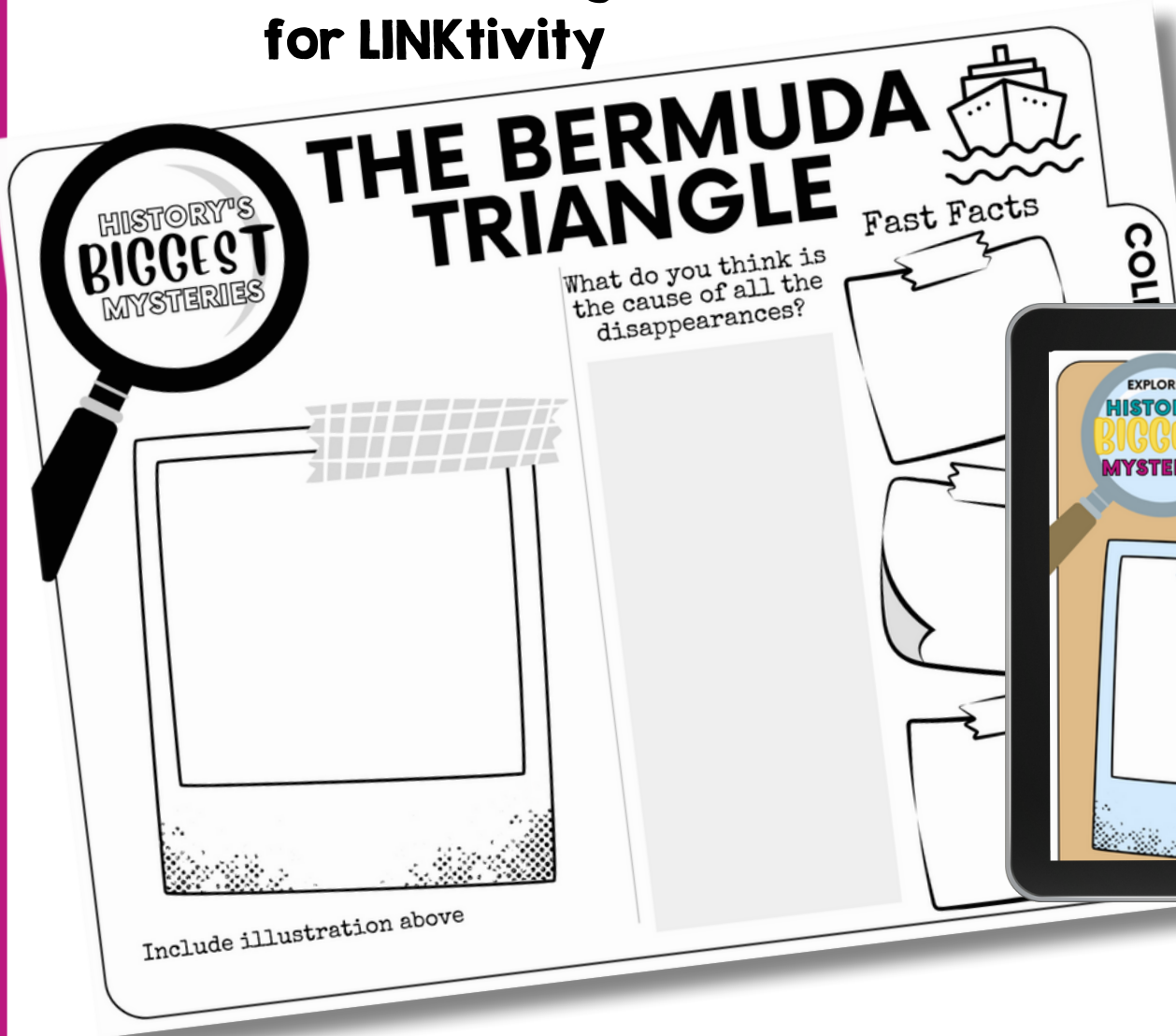


Our History's Mysteries LINKtivities also include additional "unplugged" activities that are great for extending the learning at home, for Fun Friday, indoor recess, over school breaks, & MORE!



Printable & Digital Student Recording Sheet

Printable Recording Sheet
for LINKtivity



Digital Recording
Sheet for
LINKtivity in
Google Slides

