

LOST CITY OF ATLANTIS



L  **LNK** **tivity**
Interactive Learning Guides

WAIT!

Thank you for considering this LINKtivity for your classroom, but before you make a decision - you should know that you can get **access to this LINKtivity + PLUS our entire library** for about the same price as a single LINKtivity!

The results are in: **Teachers LOVE LINKtivities...** and want more! So, we've made it SUPER easy and cost effective for you to access any and ALL of our LINKtivities inside our LINKtivity Learning membership option! Instead of purchasing just ONE LINKtivity - why not get access to ALL of them... for about the SAME PRICE!



INSIDE THE MEMBERSHIP YOU'LL HAVE UNLIMITED ACCESS TO:

- ✓ The **entire growing LINKtivity® library** inside the Membership (LINKtivities for all content areas)
- ✓ ALL **future LINKtivities** to be added to the membership (new releases each month!)
- ✓ **Teacher guides** to help you set up each LINKtivity® successfully in your classroom
- ✓ **Student resources** that go along with each LINKtivity (printable OR digital)
- ✓ **Kid-friendly rubrics** and **answer keys** for each LINKtivity®



JOIN NOW

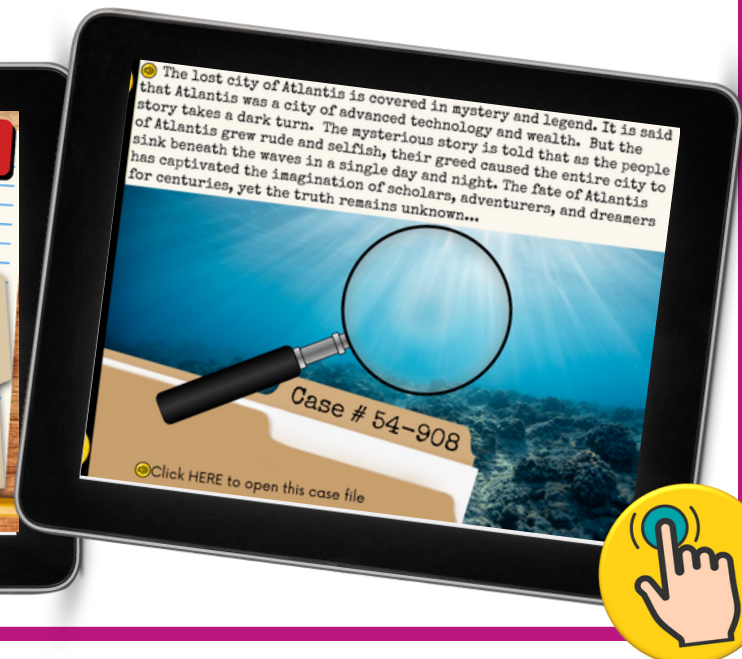
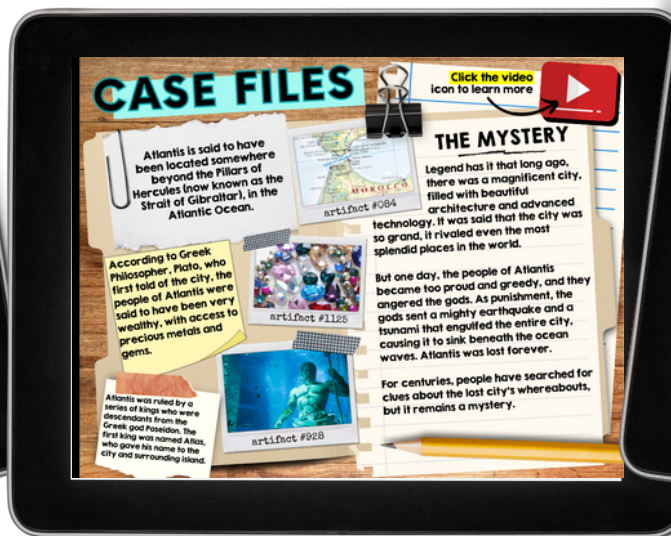




HISTORY'S BIGGEST MYSTERIES!

Discover intriguing historical mysteries with our History Mystery LINKtivity® Series, designed to unravel some of the most captivating stories that have puzzled people throughout the ages! These kid-favorite LINKtivities work great as fast finishers, at-home learning extensions, highlighting individual student interests, activities for students to complete during school breaks, & more!

Inside the History Mystery: Lost City of Atlantis LINKtivity, students will embark on a fascinating journey to uncover the secrets and mysteries of one of the most iconic mythical cities of all time. Students will discover the story of Atlantis and its possible locations as well as various theories and speculations surrounding the city's disappearance.



More Sample Slides

CLICK HERE for More to Explore!

LET'S LEARN ABOUT THE MYSTERY OF THE LOST CITY OF ATLANTIS!

Click a category below to begin exploring!

CASE FILES **THE EVIDENCE** **UNDERCOVER THEORIES**

CASE FILES

THE MYSTERY

Legend has it that long ago, there was a magnificent city, filled with beautiful architecture and advanced technology. It was said that the city was so grand, it rivaled even the most splendid places in the world.

But one day, the people of Atlantis became too proud and greedy, and they angered the gods. As punishment, the gods sent a mighty earthquake and a tsunami that engulfed the entire city, causing it to sink beneath the ocean waves. Atlantis was lost forever.

For centuries, people have searched for clues about the lost city's whereabouts, but it remains a mystery.

Atlantis is said to have been located somewhere beyond the Pillars of Hercules (now known as the Strait of Gibraltar), in the Atlantic Ocean.

According to Greek Philosopher, Plato, who first told of the city, the people of Atlantis were said to have been very wealthy, with access to precious metals and gems.

Atlantis was ruled by a series of kings who were descendants from the Greek god Poseidon. The first king was named Atlas, who gave his name to the city and surrounding island.

artifact #084

artifact #1125

artifact #928

Click the video icon to learn more

Click the video icon to learn more about the search for Atlantis.

The rulers of Atlantis were said to be very wise and just, and they governed the city fairly. They were also said to be very wealthy and powerful, with a large army and a sophisticated navy that allowed them to conquer many other lands.

THE EVIDENCE

Plato described how the people of Atlantis had become arrogant and greedy, and how they had conquered many other lands to expand their empire.

Their thirst for power eventually led them to attempt to invade Athens and the rest of Greece.

THE EVIDENCE

Some people believe that the story of Atlantis may have been inspired by real historical events or ancient civilizations.

THE EVIDENCE

Click the video icon to learn more about a tsunami.

In response to greed of the people living in Atlantis, the gods are said to have punished the people by sending a series of earthquakes and floods that caused the entire island to sink beneath the sea.

Some say a volcanic eruption or a massive tsunami may have destroyed the legendary city.

THE EVIDENCE

THEORIES

Today, the legend of the Lost City of Atlantis continues to mesmerize and thrill. There are several theories that attempt to explain why the lost city of Atlantis has never been found. Click on each card to flip it over and read about some possible theories.

1 THEORY DESTROYED
Another theory is that Atlantis was destroyed by a natural disaster such as an earthquake or a volcanic eruption. If this is the case, then the city may have been completely destroyed and its remains may have been buried beneath layers of rock.

2 THEORY

3 THEORY

4 THEORY

5 THEORY

UNDERCOVER

Navigate through the tour by clicking on the arrows

Each stop on the tour will give you more information about that location.

Let's travel over the land and sea to explore the possible sites where the City of Atlantis may have been located!

We'll be exploring Google Earth so be sure to view the directions on the left so you know how to navigate once we get there!

Click and drag your computer mouse or finger side to side or up and down to see more of the scene.

When you're ready to explore, click the Google Earth icon!

MORE TO EXPLORE!

Try these additional activities:

DESIGN THE CITY OF ATLANTIS
Using craft materials like cardboard, paper, and paint, create your own version of Atlantis. **CLICK HERE** for directions to get you started!

DEEP BLUE WATERS
Have fun in the kitchen by making an Atlantis-themed punch! **CLICK HERE** for a quick and easy recipe that you can use at home!

READ ABOUT IT!
Head to your local library and check out these cool books about the Lost City of Atlantis. **CLICK HERE** for a printable list.

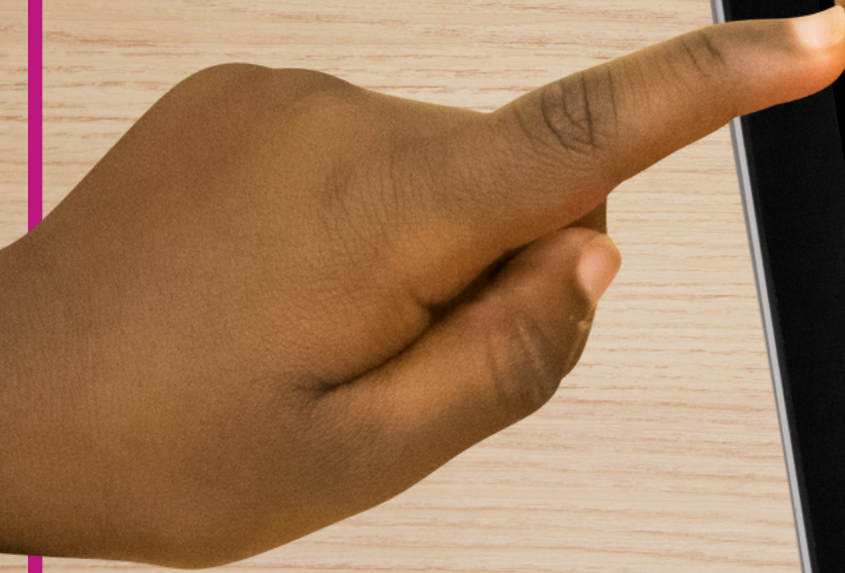
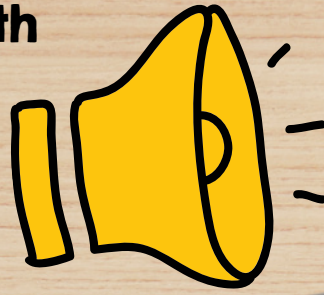
NATURAL DISASTER!
One theory suggests that Atlantis was destroyed by a natural disaster. Use household supplies to create a tornado in a bottle or an explosive volcano. **CLICK HERE** for directions!

Listen to these podcast episodes all about the Lost City of Atlantis!
PODCAST
CLICK HERE to see our podcast episodes!



This LINKtivity is provided with

AUDIO SUPPORT



CASE FILES

Click the video icon to learn more



Atlantis is said to have been located somewhere beyond the Pillars of Hercules (now known as the Strait of Gibraltar), in the Atlantic Ocean.



THE MYSTERY

Legend has it that long ago, there was a magnificent city, filled with beautiful architecture and advanced technology. It was said that the city was so grand, it rivaled even the most splendid places in the world.



According to Greek Philosopher, Plato, who first told of the city, the people of Atlantis were said to have been very wealthy, with access to precious metals and gems.



But one day, the people of Atlantis became too proud and greedy, and they angered the gods. As punishment, the gods sent a mighty earthquake and a tsunami that engulfed the entire city, causing it to sink beneath the ocean waves. Atlantis was lost forever.



Atlantis was ruled by a series of kings who were descendants from the Greek god Poseidon. The first king was named Atlas, who gave his name to the city and surrounding island.

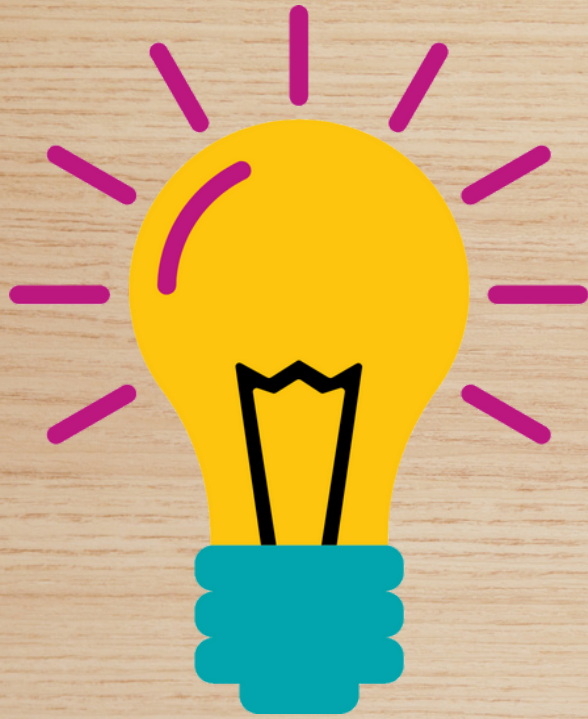


For centuries, people have searched for clues about the lost city's whereabouts, but it remains a mystery.

Perfect for English language learners or students who could use a little extra support!



MORE TO EXPLORE!

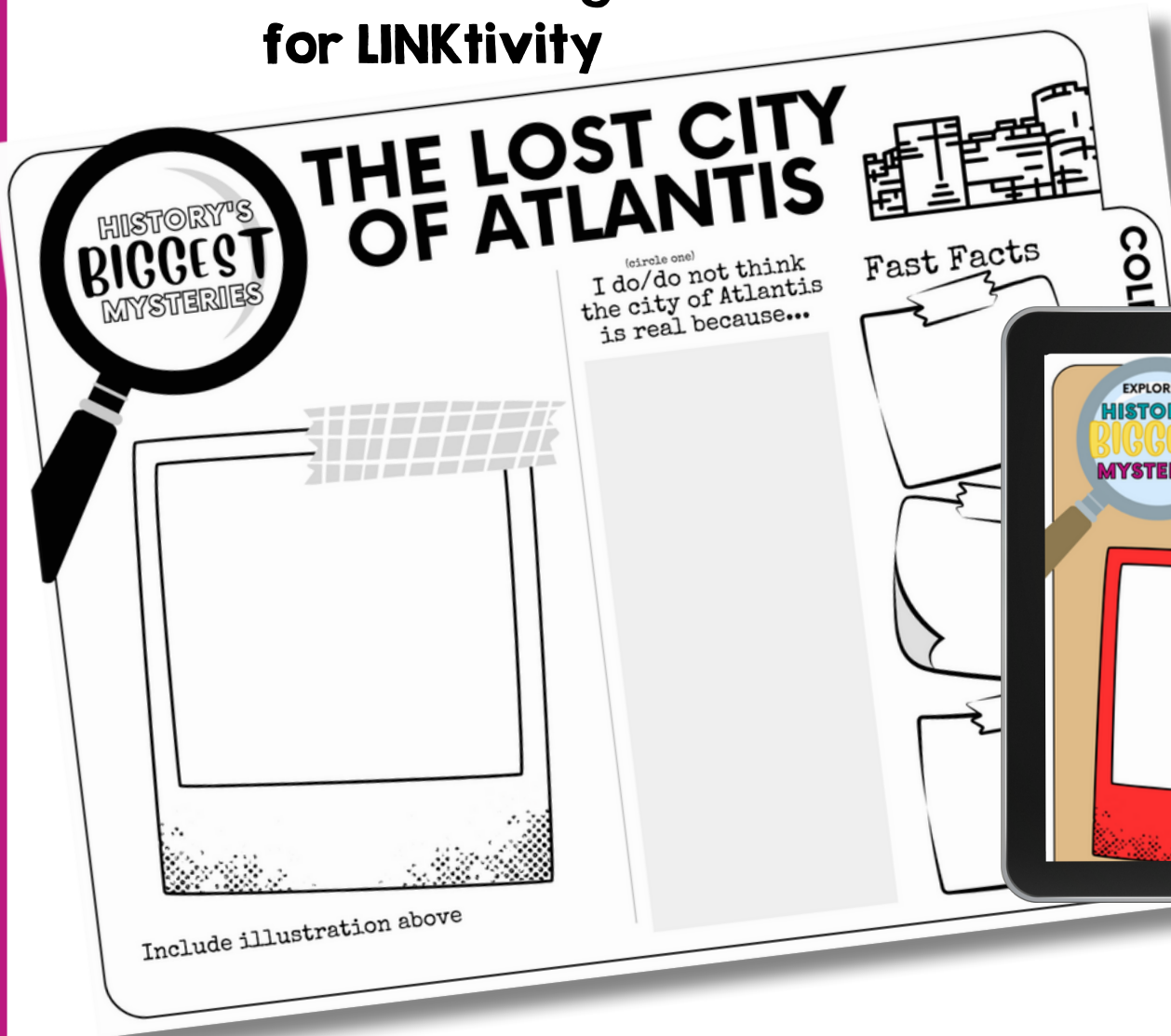


Our History's Mysteries LINKtivities also include additional "unplugged" activities that are great for extending the learning at home, for Fun Friday, indoor recess, over school breaks, & MORE!



Printable & Digital Student Recording Sheet

Printable Recording Sheet
for LINKtivity



Digital Recording
Sheet for
LINKtivity in
Google Slides

