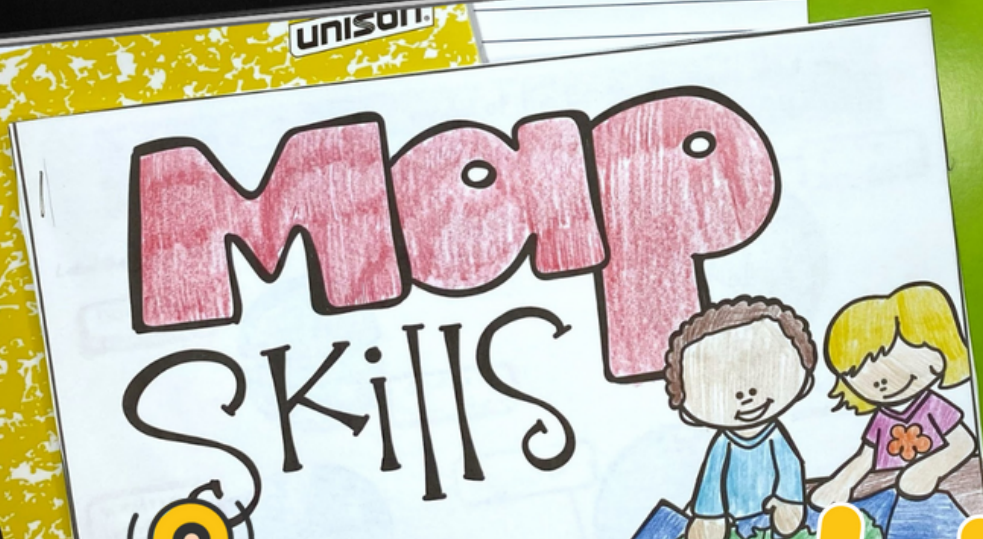
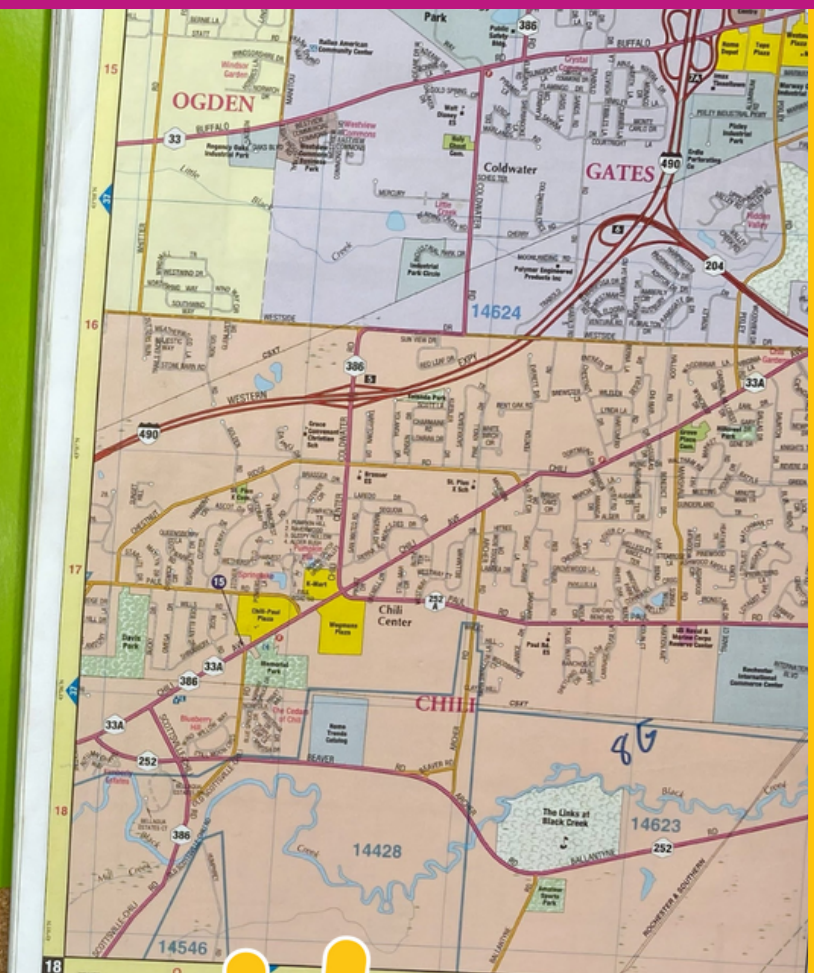


MAPS SKILLS



 **LNK** **Activity**
Interactive Learning Guides

WAIT!

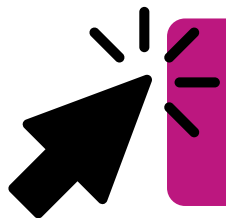
Thank you for considering this LINKtivity for your classroom, but before you make a decision - you should know that you can get **access to this LINKtivity + PLUS our entire library** for about the same price as a single LINKtivity!

The results are in: **Teachers LOVE LINKtivities...** and want more! So, we've made it SUPER easy and cost effective for you to access any and ALL of our LINKtivities inside our LINKtivity Learning membership option! Instead of purchasing just ONE LINKtivity - why not get access to ALL of them... for about the SAME PRICE!



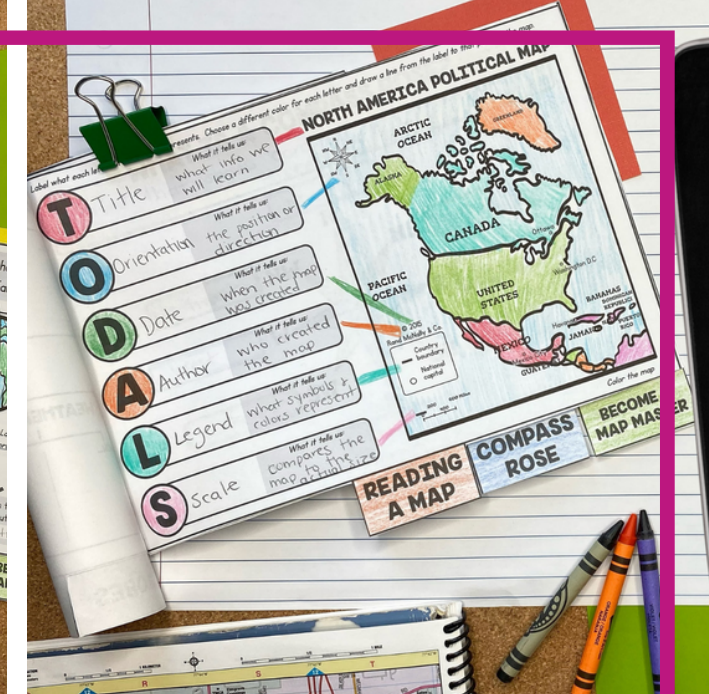
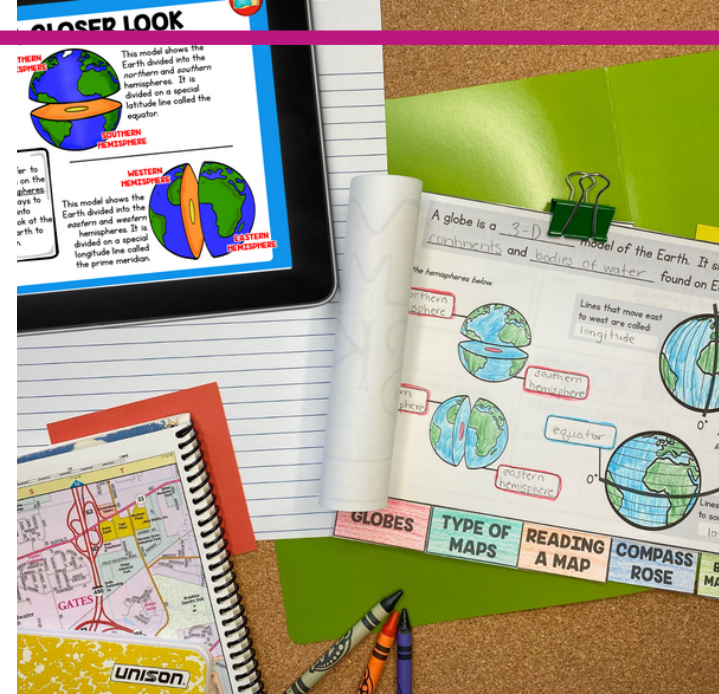
INSIDE THE MEMBERSHIP YOU'LL HAVE UNLIMITED ACCESS TO:

- ✓ The **entire growing LINKtivity® library** inside the Membership (LINKtivities for all content areas)
- ✓ ALL **future LINKtivities** to be added to the membership (new releases each month!)
- ✓ **Teacher guides** to help you set up each LINKtivity® successfully in your classroom
- ✓ **Student resources** that go along with each LINKtivity (printable OR digital)
- ✓ **Kid-friendly rubrics** and **answer keys** for each LINKtivity®

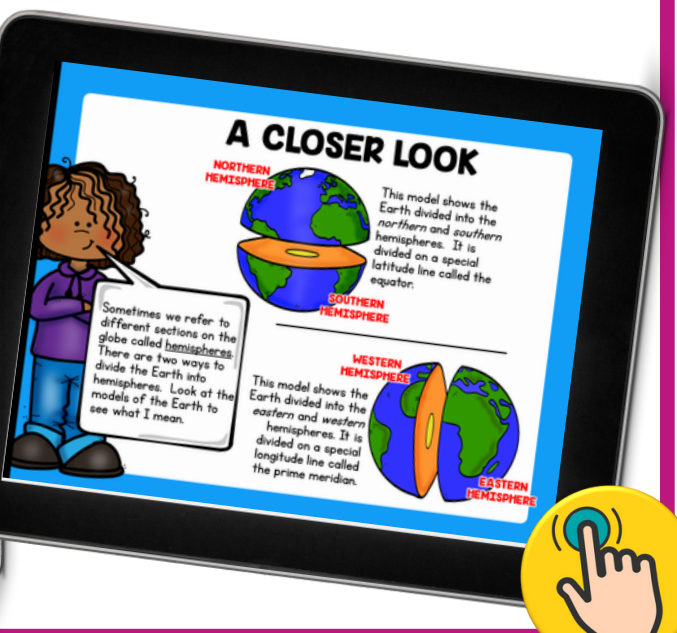


JOIN NOW





Your students are going to love this hands-on approach to learning important map skills such as how to read a globe, latitude and longitude lines, map grids, the different types of maps, map history and how to identify and read the parts of a map. Resource includes a LINKtivity® digital learning guide, a student recording sheet (printable or digital), answer key, a rubric, and a teacher guide.



More Sample Slides

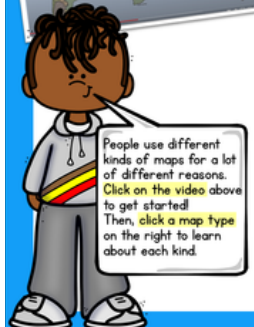
ZAMBIA, AFRICA



Zambia is a country in Africa, located in the southern hemisphere. It is home to more than 17 million people.

Latitude and Longitude Coordinates:
13°S latitude, 27°E longitude

TYPES OF MAPS




People use different kinds of maps for a lot of different reasons. Click on the video above to get started! Then, click a map type on the right to learn about each kind.

- POLITICAL MAP**
- PHYSICAL MAP**
- TOPOGRAPHIC MAP**
- WEATHER MAPS (CLIMATE & PRECIPITATION)**
- DISTRIBUTION MAP**
- ROAD MAP**

PHYSICAL MAP

COUNTRY OF ENGLAND

STATE OF NEW YORK




In which parts of England will you find mountains? How about New York?

A physical map is so cool because it shows the physical features of a place like the rivers, mountains, forests, and lakes! Physical maps can be of an entire country, or even states.

Physical features are usually shown in different colors. For example, bodies of water are often blue, mountains are often shades of brown, and flat areas are usually shown in shades of green.

READING A MAP



Maps have a LOT of information on them. Luckily, I have a simple trick to help me remember all the important parts of a map. It's called T.O.D.A.L.S. Click on each letter on the map and I'll tell you what each one stands for.

TITLE

"T" stands for title. Each map has a title and it tells us what type of information we will learn from the map. On this map we will learn the political boundaries of the countries found in North America.

North America Political Map

- National capital
- Major city
- Country boundary

0 200 400 600 Miles
 0 200 400 600 Kilometers


T O D A L S

MAP HISTORY

CLICK EACH MAP ON THE TIMELINE TO SEE HOW MAPS HAVE CHANGED OVER TIME.



100 BC, 600 BC, 609 AD, Today




The oldest world map known to man is the Babylonian World Map, also known as the Imago Mundi. It is believed to be created between 600 and 700 BC. It was made on clay tablets and has special characters and letters carved into the clay. The map shows what the people of that time believed the world to look like. It was discovered in 1899 in what is now Iraq.

BECOME A MAP MASTER!

CLICK ON A MAP BELOW TO PRACTICE YOUR MAP-READING SKILLS.

- MAP 1** TOPOGRAPHY OF THE UNITED STATES
- MAP 2** POLITICAL MAP OF EUROPE
- MAP 3** WORLD CLIMATE MAP
- MAP 4** POPULATION MAP OF THE UNITED STATES
- MAP 5** ROAD MAP OF BAR HARBOR, MAINE
- MAP 6** NATURAL RESOURCES OF THE WORLD

MAP 5



BAR HARBOR, MAINE

- Main Roads
- Minor Roads
- Water
- Golf Club
- National Park
- Hospital

Mount Desert Island

Acadia National Park

Frenchman Bay

1 mile

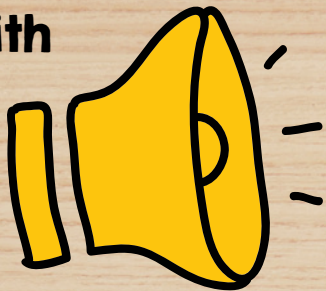
© 2012 Google, Portland, AcadiaNationalPark.com

Locate the red line (—) About how many miles long is Mt. Desert Island? Which golf club is located north of Acadia National Park?



This LINKtivity is provided with

AUDIO SUPPORT



Perfect for English language learners or students who could use a little extra support!

PHYSICAL MAP

COUNTRY OF ENGLAND

STATE OF NEW YORK

TRY-IT!
In which parts of England will you find mountains? How about New York?

A physical map is so cool because it shows the physical features of a place like the rivers, mountains, forests, and lakes! Physical maps can be of an entire country, or even states.

Physical features are usually shown in different colors. For example, bodies of water are often blue, mountains are often shades of brown, and flat areas are usually shown in shades of green.



Printable & Digital Student Flipbook

Printable Flipbook for LINKtivity

Map Skills

BY: _____

A globe is a _____ model of the Earth. It shows all of the _____ and _____ found on Earth.

Label the hemisphere below.

Lines that move east to west are called _____.

Label the equator and prime meridian line.

Lines that move north to south are called _____.

GLOBES

Complete the chart below for each type of map by listing what each map shows and how the map can be helpful.

POLITICAL MAPS	PHYSICAL MAPS	TOPOGRAPHIC MAPS
SHOW...	SHOW...	SHOW...
ARE HELPFUL BECAUSE...	ARE HELPFUL BECAUSE...	ARE HELPFUL BECAUSE...

TYPE OF MAPS

WEATHER MAPS	DISTRIBUTION MAPS	ROAD MAPS
SHOW...	SHOW...	SHOW...
ARE HELPFUL BECAUSE...	ARE HELPFUL BECAUSE...	ARE HELPFUL BECAUSE...

TYPE OF MAPS

Read each letter of "TODALS" separately. Draw a different color for each letter and draw a line from the dot to the map.

T _____

O _____

D _____

A _____

L _____

S _____

NORTH AMERICA POLITICAL MAP

READING A MAP

WHAT IS A COMPASS ROSE?

N

NE

E

SE

S

SW

W

NW

COMPASS ROSE

Read each map in the "Becoming a Map Master" category of your LINKtivity and record the answers to each question below.

MAP 1 Which area of the country has the highest elevation? _____

Locate the _____ What is the elevation of the top in this area? _____

MAP 2 Locate the road that crosses the river. Estimate the distance from one end of the bridge to the other. _____

MAP 3 Do which countries will you find highest elevations? _____

What names of states do you find at the Equator in Africa? _____

BECOME A MAP MASTER

MAP 4 Which state has the highest population? _____

Locate that state on a map. About how many miles long is it? _____

MAP 5 Which state has a higher population? _____

Which state has a higher population? _____

MAP 6 Which natural resource can you find in the western coast of South America? _____

Which energy resource does Australia have more of? _____

BECOME A MAP MASTER

TODALS

READING A MAP

POLITICAL MAP

Digital Flipbook for LINKtivity in Google Slides

LINKtivity : STUDENT FLIPBOOK RUBRIC

	4 - EXCELLENT	3 - GOOD	2 - SATISFACTORY	1 - NEEDS IMPROVEMENT
NEATNESS & APPEARANCE	My Flipbook is very neat and easy to read. I neatly colored in my illustrations with great detail. It is clear that I took my time to make my Flipbook reflect my learning.	My Flipbook is neat and my writing is easy to read. I neatly colored in my illustrations.	My Flipbook is somewhat neat. Some of my writing is hard to read. Illustrations are NOT colored, or are sparsely done.	My Flipbook is quite sloppy. My writing is hard to read. Illustrations are NOT colored, or are sparsely done.
ACCURACY & COMPLETENESS	The information in my Flipbook is 100% correct. I've included many details from the Link 4 Think and have put what I've learned clearly in my own words. I have included information that goes above and beyond what is required.	The information in my Flipbook is mostly correct. I've included several details from the Link 4 Think, written mostly in my own words. My Flipbook includes all of the required written responses.	My Flipbook contains several incorrect or missing pieces of information. The information in my Flipbook does not fully complete my Flipbook correctly.	My Flipbook has many incorrect or missing pieces of information. I struggled to use the information from the Link 4 Think to complete my Flipbook correctly.
SPELLING & GRAMMAR	My Flipbook contains no errors in spelling or grammar.	My Flipbook contains some errors in spelling and grammar.		

Complete the chart below for each type of map by listing what each map shows and how the map can be helpful.

POLITICAL MAPS	PHYSICAL MAPS	TOPOGRAPHIC MAPS
SHOW... national, country and state boundaries, cities and towns	SHOW... rivers, mountains, forests, and lakes of different areas	SHOW... the elevation of an area
ARE HELPFUL BECAUSE... they help us know the locations of different places	ARE HELPFUL BECAUSE... they help us know the physical features of an area	ARE HELPFUL BECAUSE... they help us see how steep or flat an area of land is

TYPE OF MAPS

WEATHER MAPS	DISTRIBUTION MAPS	ROAD MAPS
SHOW... current weather or the typical weather over time	SHOW... how resources or population are spread out over an area	SHOW... locations of highways, roads, railways, and landmarks
ARE HELPFUL BECAUSE... they help us know what type of climate to expect in different areas	ARE HELPFUL BECAUSE... they help us know how many people live in an area	ARE HELPFUL BECAUSE... we can use them to get directions to different places.

TYPE OF MAPS

Answer Key & Rubric



Hand-drawn student work showing completed flipbook pages for "Map Skills", "North America Political Map", "Compass Rose", and "Orientation".

Map Skills (Handwritten): A globe is a 3-D model of the Earth. It shows all of the continents and bodies of water found on Earth.

North America Political Map (Handwritten): Shows a map of North America with labels for Canada, United States, Mexico, and various cities like Washington DC, Toronto, and Mexico City.

Compass Rose (Handwritten): Shows a compass rose with directions N, NE, E, SE, S, SW, W, NW.

Orientation (Handwritten): Includes a globe and a compass rose with the word "ORIENTATION" written in large letters.